

## JMJD1B Antibody

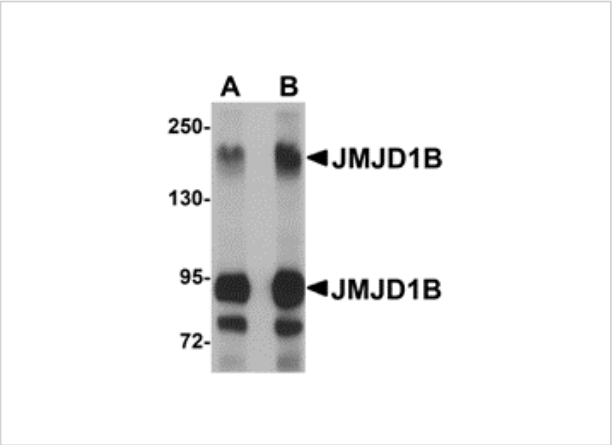
CATALOG NUMBER: 5369

### Specifications

Host Species	Rabbit
Species Reactivity	Human, Mouse, Rat
Immunogen	JMJD1B antibody was raised against a 20 amino acid synthetic peptide from near the center of human JMJD1B. The immunogen is located within amino acids 1050 - 1100 of JMJD1B.
Conjugate	Unconjugated
Tested Applications	ELISA, IF, IHC-P, WB
User Note	Optimal dilutions for each application to be determined by the researcher.
Specificity	This antibody will not cross-react with JMJD1A or JMJD1C.

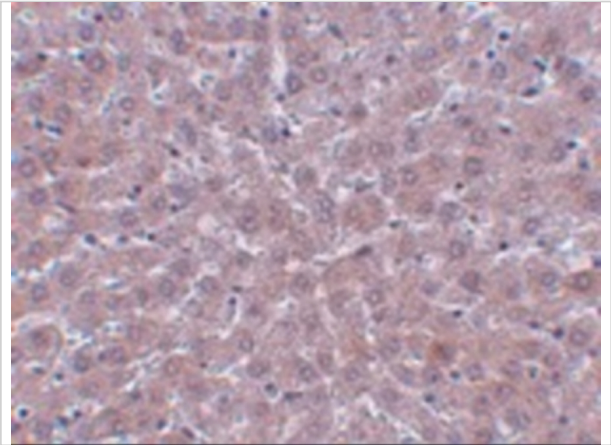
### Properties

Purification	JMJD1B Antibody is affinity chromatography purified via peptide column.
Clonality	Polyclonal
Isotype	IgG
Physical State	Liquid
Buffer	JMJD1B Antibody is supplied in PBS containing 0.02% sodium azide.
Concentration	1 mg/mL
Storage Conditions	JMJD1B antibody can be stored at 4°C for three months and -20°C, stable for up to one year. As with all antibodies care should be taken to avoid repeated freeze thaw cycles. Antibodies should not be exposed to prolonged high temperatures.



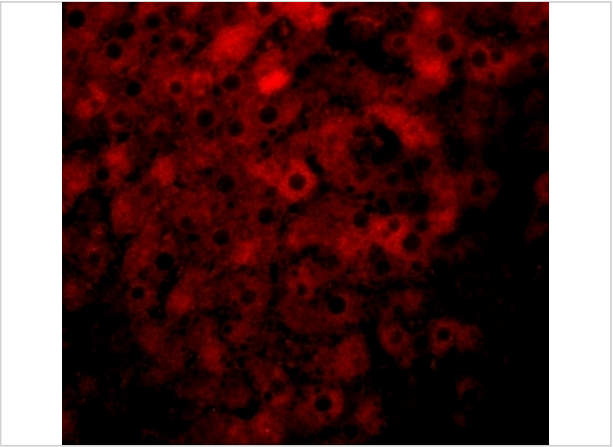
### JMJD1B Antibody 1

Western blot analysis of JMJD1B in rat liver tissue lysate with JMJD1B antibody at (A) 1 and (B) 2  $\mu\text{g/mL}$ .



### JMJD1B Antibody 2

Immunohistochemistry of JMJD1B in rat liver tissue with JMJD1B antibody at 2.5  $\mu\text{g/mL}$ .



### JMJD1B Antibody 3

Immunofluorescence of JMJD1B in rat liver tissue with JMJD1B antibody at 20  $\mu\text{g/mL}$ .

## Disclaimer

Disclaimer	Optimal dilutions/concentrations should be determined by the end user. The information provided is a guideline for product use. This product is for research use only.
------------	--

For research use only. For additional information, visit ProSci's [Terms and Conditions Page](#).