

FAM120A Antibody

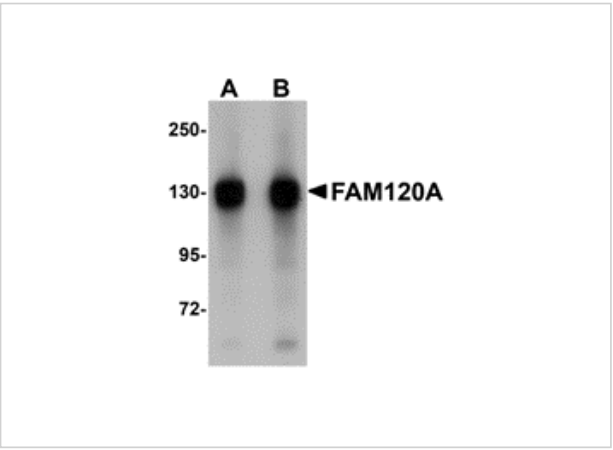
CATALOG NUMBER: 5307

Specifications

Host Species	Rabbit
Species Reactivity	Human, Mouse, Rat
Homology	Predicted species reactivity based on immunogen sequence: Bovine: (100%)
Immunogen	FAM120A antibody was raised against an 18 amino acid synthetic peptide from near the center of human FAM120A. The immunogen is located within amino acids 610 - 660 of FAM120A.
Conjugate	Unconjugated
Tested Applications	ELISA, IF, IHC-P, WB
User Note	Optimal dilutions for each application to be determined by the researcher.
Specificity	This antibody will not cross-react with FAM120B / PGCC1.

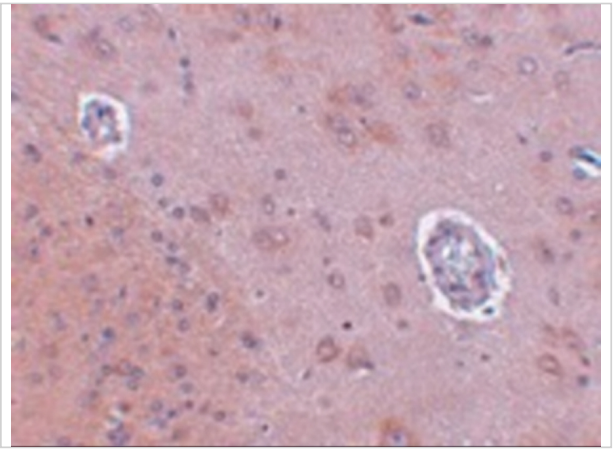
Properties

Purification	FAM120A Antibody is affinity chromatography purified via peptide column.
Clonality	Polyclonal
Isotype	IgG
Physical State	Liquid
Buffer	FAM120A Antibody is supplied in PBS containing 0.02% sodium azide.
Concentration	1 mg/mL
Storage Conditions	FAM120A antibody can be stored at 4°C for three months and -20°C, stable for up to one year. As with all antibodies care should be taken to avoid repeated freeze thaw cycles. Antibodies should not be exposed to prolonged high temperatures.



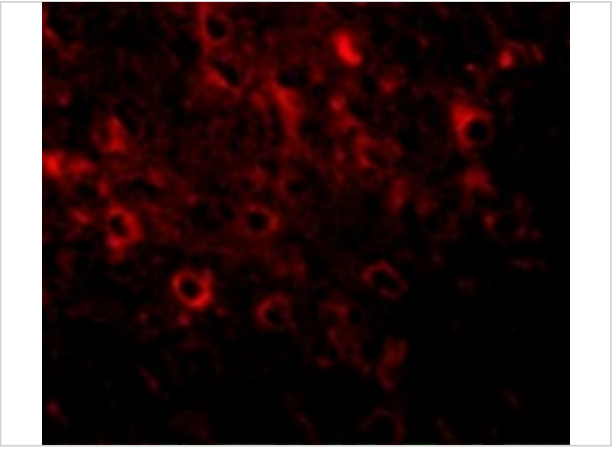
FAM120A Antibody 1

Western blot analysis of FAM120A in SK-N-SH cell lysate with FAM120A antibody at (A) 0.5 and (B) 1 µg/mL.



FAM120A Antibody 2

Immunohistochemistry of FAM120A in rat brain tissue with FAM120A antibody at 2.5 µg/mL.



FAM120A Antibody 3

Immunofluorescence of FAM120A in Rat Brain cells with FAM120A antibody at 20 µg/mL.

Disclaimer

Disclaimer	Optimal dilutions/concentrations should be determined by the end user. The information provided is a guideline for product use. This product is for research use only.
------------	--

For research use only. For additional information, visit ProSci's [Terms and Conditions Page](#).