

SYPL1 Antibody

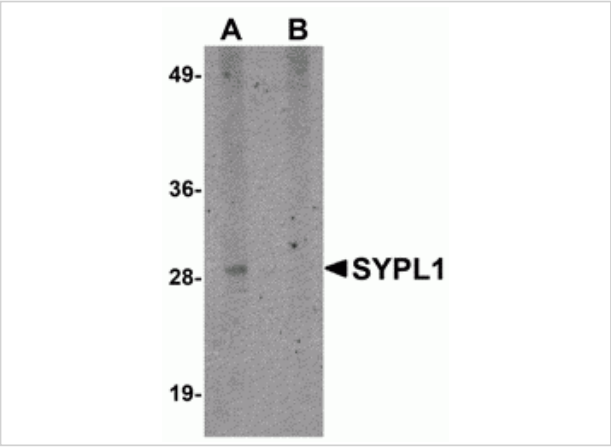
CATALOG NUMBER: 5285

Specifications

Host Species	Rabbit
Species Reactivity	Human, Mouse, Rat
Immunogen	SYPL1 antibody was raised against a 16 amino acid synthetic peptide from near the amino terminus of human SYPL1. The immunogen is located within the first 50 amino acids of SYPL1.
Conjugate	Unconjugated
Tested Applications	ELISA, WB
User Note	Optimal dilutions for each application to be determined by the researcher.
Specificity	This antibody will not recognize synaptophysin of SYPL2. Two isoforms of SYPL1 are known to exist; this antibody will only recognize the longer isoform.

Properties

Purification	SYPL1 Antibody is affinity chromatography purified via peptide column.
Clonality	Polyclonal
Isotype	IgG
Physical State	Liquid
Buffer	SYPL1 Antibody is supplied in PBS containing 0.02% sodium azide.
Concentration	1 mg/mL
Storage Conditions	SYPL1 antibody can be stored at 4°C for three months and -20°C, stable for up to one year. As with all antibodies care should be taken to avoid repeated freeze thaw cycles. Antibodies should not be exposed to prolonged high temperatures.



SYPL1 Antibody 1

Western blot analysis of SYPL1 in human brain tissue lysate with SYPL1 antibody at 1 µg/mL in (A) the absence and (B) the presence of blocking peptide.

Disclaimer

Disclaimer	Optimal dilutions/concentrations should be determined by the end user. The information provided is a guideline for product use. This product is for research use only.
------------	--

For research use only. For additional information, visit ProSci's [Terms and Conditions Page](#).