

GALNT10 Antibody

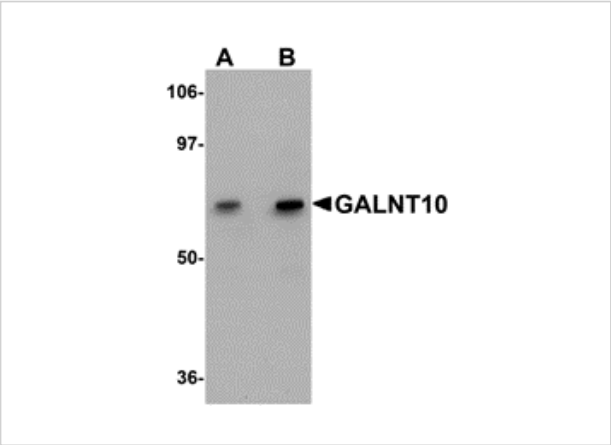
CATALOG NUMBER: 5279

Specifications

| | |
|---------------------|---|
| Host Species | Rabbit |
| Species Reactivity | Human, Mouse, Rat |
| Immunogen | GALNT10 antibody was raised against an 18 amino acid synthetic peptide near the carboxy terminus of human GALNT10. The immunogen is located within amino acids 530 - 580 of GALNT10. |
| Conjugate | Unconjugated |
| Tested Applications | ELISA, IF, IHC-P, WB |
| User Note | Optimal dilutions for each application to be determined by the researcher. |

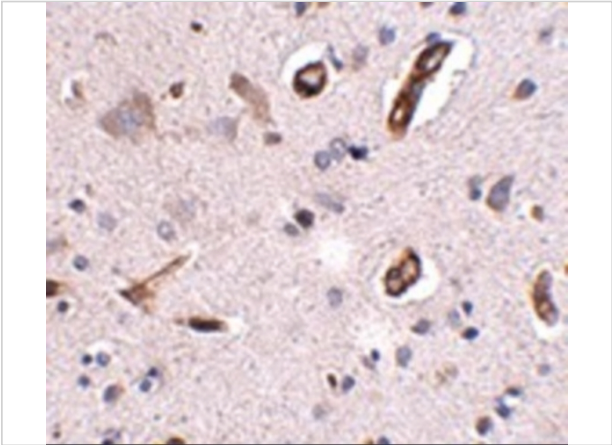
Properties

| | |
|--------------------|---|
| Purification | GALNT10 Antibody is affinity chromatography purified via peptide column. |
| Clonality | Polyclonal |
| Isotype | IgG |
| Physical State | Liquid |
| Buffer | GALNT10 Antibody is supplied in PBS containing 0.02% sodium azide. |
| Concentration | 1 mg/mL |
| Storage Conditions | GALNT10 antibody can be stored at 4°C for three months and -20°C, stable for up to one year. As with all antibodies care should be taken to avoid repeated freeze thaw cycles. Antibodies should not be exposed to prolonged high temperatures. |



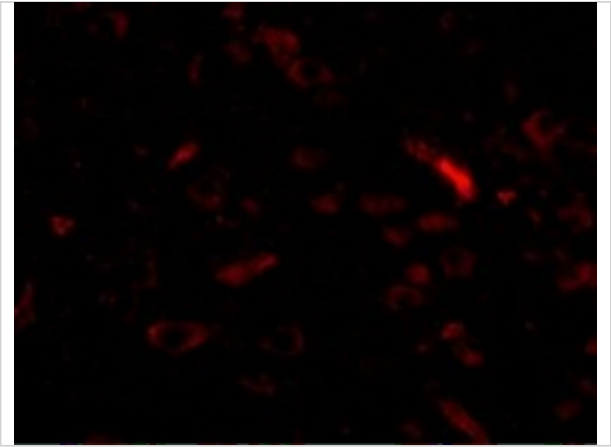
GALNT10 Antibody 1

Western blot analysis of GALNT10 in SK-N-SH cell lysate with GALNT10 antibody at (A) 1 and (B) 2 µg/mL.



GALNT10 Antibody 2

Immunohistochemistry of GALNT10 in human brain tissue with GALNT10 antibody at 2.5 µg/mL.



GALNT10 Antibody 3

Immunofluorescence of GALNT10 in Human Brain cells with GALNT10 antibody at 20 µg/mL.

Disclaimer

| | |
|------------|--|
| Disclaimer | Optimal dilutions/concentrations should be determined by the end user. The information provided is a guideline for product use. This product is for research use only. |
|------------|--|

For research use only. For additional information, visit ProSci's [Terms and Conditions Page](#).