

CCDC134 Antibody

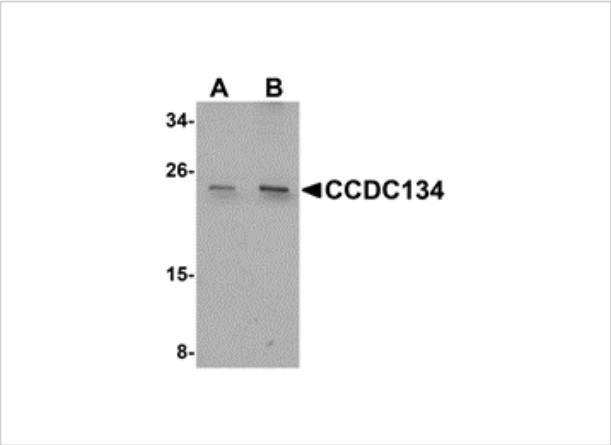
CATALOG NUMBER: 5265

Specifications

Host Species	Rabbit
Species Reactivity	Human, Mouse, Rat
Immunogen	CCDC134 antibody was raised against a 17 amino acid synthetic peptide near the amino terminus of human CCDC134. The immunogen is located within the first 50 amino acids of CCDC134.
Conjugate	Unconjugated
Tested Applications	ELISA, IF, IHC-P, WB
User Note	Optimal dilutions for each application to be determined by the researcher.

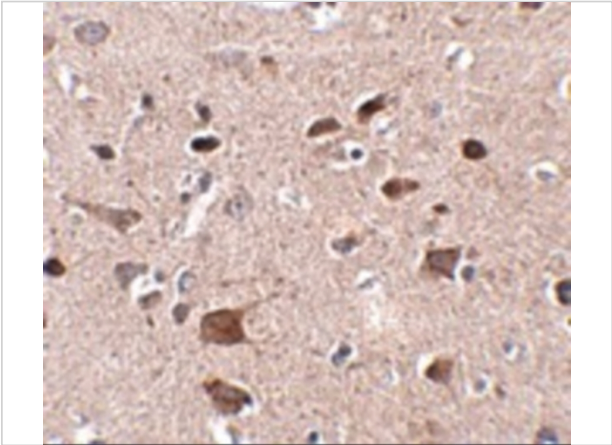
Properties

Purification	CCDC134 Antibody is affinity chromatography purified via peptide column.
Clonality	Polyclonal
Isotype	IgG
Physical State	Liquid
Buffer	CCDC134 Antibody is supplied in PBS containing 0.02% sodium azide.
Concentration	1 mg/mL
Storage Conditions	CCDC134 antibody can be stored at 4°C for three months and -20°C, stable for up to one year. As with all antibodies care should be taken to avoid repeated freeze thaw cycles. Antibodies should not be exposed to prolonged high temperatures.



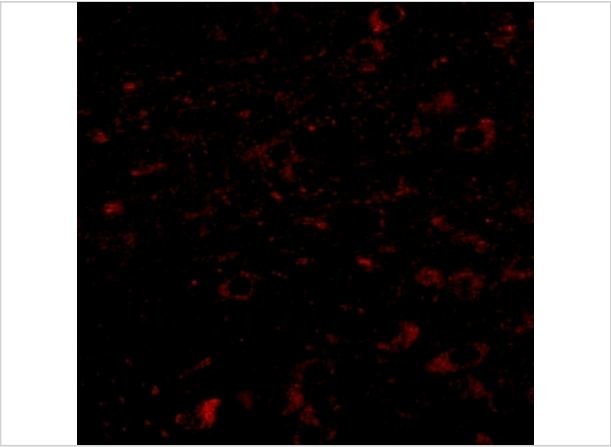
CCDC134 Antibody 1

Western blot analysis of CCDC134 in rat brain tissue lysate with CCDC134 antibody at (A) 1 and (B) 2 µg/mL.



CCDC134 Antibody 2

Immunohistochemistry of CCDC134 in human brain tissue with CCDC134 antibody at 2.5 µg/mL.



CCDC134 Antibody 3

Immunofluorescence of CDCC134 in human brain tissue with CDCC134 antibody at 20 µg/mL.

Disclaimer

Disclaimer	Optimal dilutions/concentrations should be determined by the end user. The information provided is a guideline for product use. This product is for research use only.
------------	--

For research use only. For additional information, visit ProSci's [Terms and Conditions Page](#).