

THEM2 Antibody

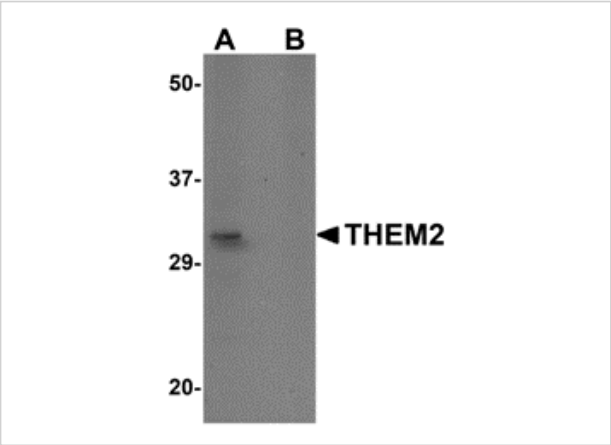
CATALOG NUMBER: 5257

Specifications

Host Species	Rabbit
Species Reactivity	Human, Mouse, Rat
Immunogen	THEM2 antibody was raised against a 17 amino acid synthetic peptide near the carboxy terminus of human THEM2. The immunogen is located within the last 50 amino acids of THEM2.
Conjugate	Unconjugated
Tested Applications	ELISA, IF, IHC-P, WB
User Note	Optimal dilutions for each application to be determined by the researcher.

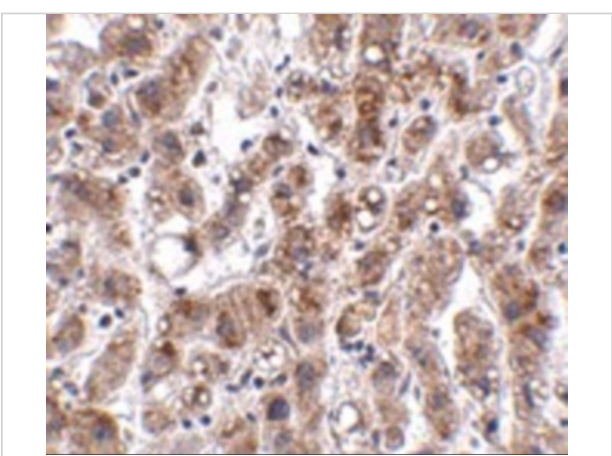
Properties

Purification	THEM2 Antibody is affinity chromatography purified via peptide column.
Clonality	Polyclonal
Isotype	IgG
Physical State	Liquid
Buffer	THEM2 Antibody is supplied in PBS containing 0.02% sodium azide.
Concentration	1 mg/mL
Storage Conditions	THEM2 antibody can be stored at 4°C for three months and -20°C, stable for up to one year. As with all antibodies care should be taken to avoid repeated freeze thaw cycles. Antibodies should not be exposed to prolonged high temperatures.



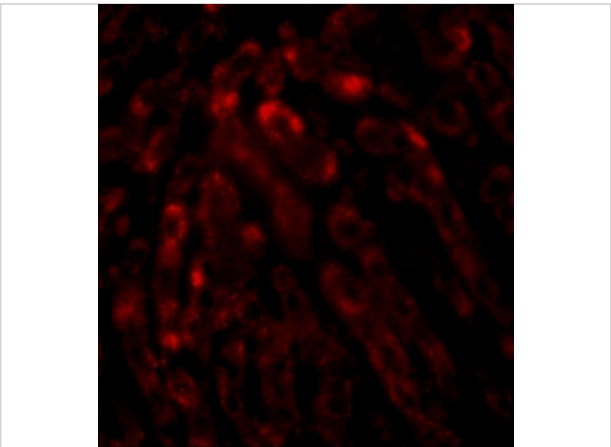
THEM2 Antibody 1

Western blot analysis of THEM2 in HepG2 cell lysate with THEM2 antibody at 1 µg/mL in (A) the absence and (B) the presence of blocking peptide.



THEM2 Antibody 2

Immunohistochemistry of THEM2 in human liver tissue with THEM2 antibody at 2.5 µg/mL.



THEM2 Antibody 3

Immunofluorescence of THEM2 in human liver tissue with THEM2 antibody at 20 µg/mL.

Disclaimer

Disclaimer	Optimal dilutions/concentrations should be determined by the end user. The information provided is a guideline for product use. This product is for research use only.
------------	--

For research use only. For additional information, visit ProSci's [Terms and Conditions Page](#).