

## OCN Antibody

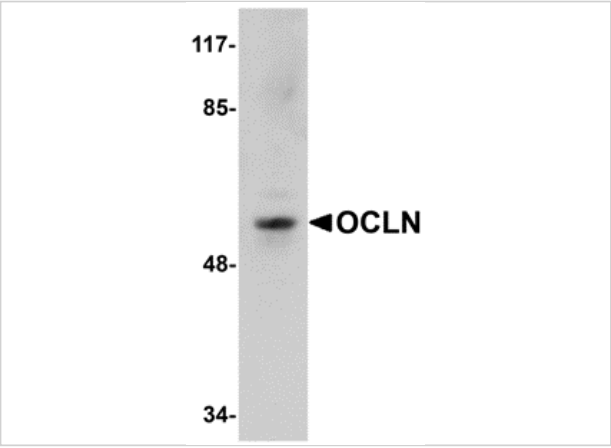
CATALOG NUMBER: 5191

### Specifications

Host Species	Rabbit
Species Reactivity	Human, Mouse, Rat
Immunogen	OCN antibody was raised against a 15 amino acid synthetic peptide from near the carboxy terminus of human OCN. The immunogen is located within the last 50 amino acids of OCN.
Conjugate	Unconjugated
Tested Applications	ELISA, IF, IHC-P, WB
User Note	Optimal dilutions for each application to be determined by the researcher.
Specificity	At least three isoforms of OCN are known to exist.
Predicted Molecular Weight	Predicted: 57 kDa Observed: 57 kDa

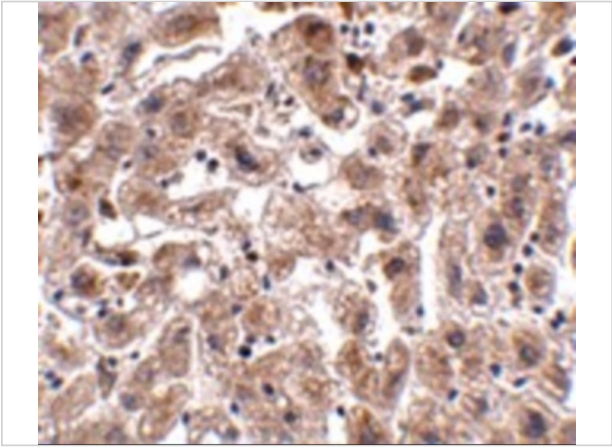
### Properties

Purification	OCN Antibody is affinity chromatography purified via peptide column.
Clonality	Polyclonal
Isotype	IgG
Physical State	Liquid
Buffer	OCN Antibody is supplied in PBS containing 0.02% sodium azide.
Concentration	1 mg/mL
Storage Conditions	OCN antibody can be stored at 4°C for three months and -20°C, stable for up to one year. As with all antibodies care should be taken to avoid repeated freeze thaw cycles. Antibodies should not be exposed to prolonged high temperatures.



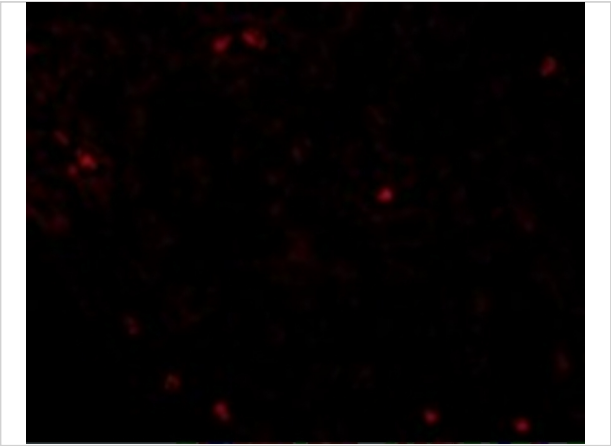
OCLN Antibody 1

Western blot analysis of OCLN in human liver tissue lysate with OCLN antibody at 1 µg/mL.



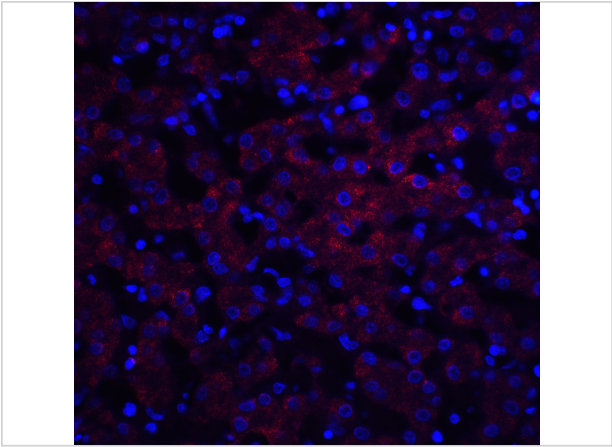
OCLN Antibody 2

Immunohistochemistry of OCLN in human liver tissue with OCLN antibody at 2.5 µg/mL.



OCLN Antibody 3

Immunofluorescence of OCLN in Human Liver tissue with OCLN antibody at 20 µg/mL.



OCLN Antibody 4

Immunofluorescence of OCLN in human liver tissue with OCLN antibody at 20 µg/ml.

Red: OCLN Antibody (5191)  
Blue: DAPI staining

Disclaimer

Disclaimer	Optimal dilutions/concentrations should be determined by the end user. The information provided is a guideline for product use. This product is for research use only.
------------	--

For research use only. For additional information, visit ProSci's [Terms and Conditions Page](#).