

CLDN1 Antibody

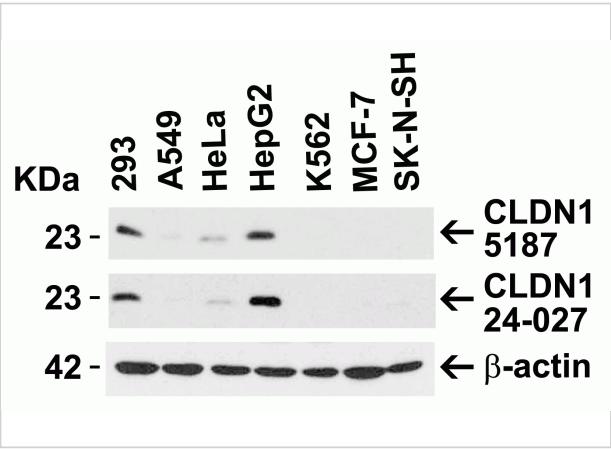
CATALOG NUMBER: 5187

Specifications

| | |
|----------------------------|---|
| Host Species | Rabbit |
| Species Reactivity | Human, Rat |
| Homology | Predicted species reactivity based on immunogen sequence: Bovine: (100%), Mouse (95%) |
| Immunogen | Anti-CLDN1 antibody (5187) was raised against a peptide corresponding to 20 amino acids near the carboxy terminus of human CLDN1. The immunogen is located within the last 50 amino acids of CLDN1. |
| Conjugate | Unconjugated |
| Tested Applications | ELISA, ICC, IF, WB |
| User Note | Optimal dilutions for each application to be determined by the researcher. |
| Predicted Molecular Weight | Predicted: 23kD Observed: 23 kD |

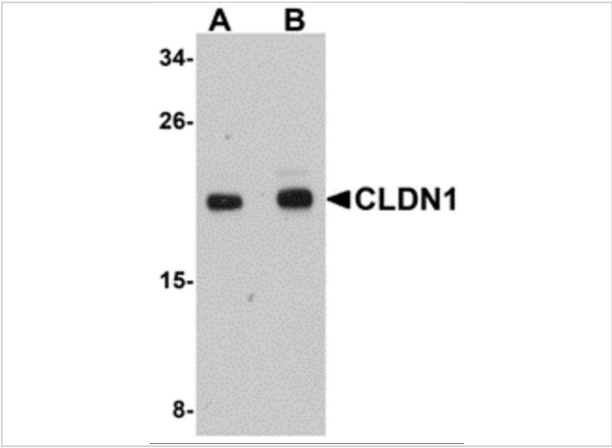
Properties

| | |
|--------------------|---|
| Purification | CLDN1 Antibody is affinity chromatography purified via peptide column. |
| Clonality | Polyclonal |
| Isotype | IgG |
| Physical State | Liquid |
| Buffer | CLDN1 Antibody is supplied in PBS containing 0.02% sodium azide. |
| Concentration | 1 mg/mL |
| Storage Conditions | CLDN1 antibody can be stored at 4°C for three months and -20°C, stable for up to one year. As with all antibodies care should be taken to avoid repeated freeze thaw cycles. Antibodies should not be exposed to prolonged high temperatures. |



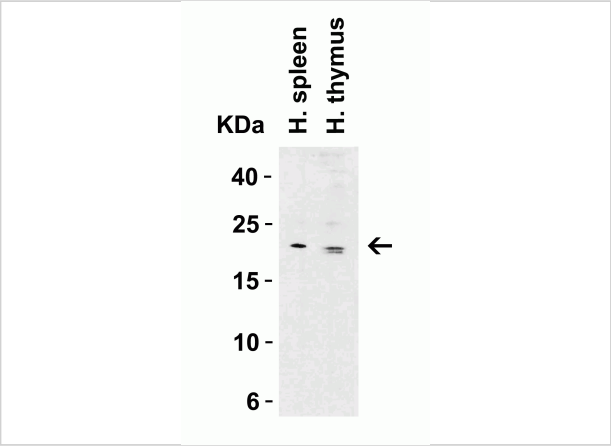
CLDN1 Antibody 1

Figure 1 Independent Antibody Validation (IAV) via Protein Expression Profile in Human Cell Lines
 Loading: 15 µg of lysates per lane. Antibodies: CLDN1, 5187 (1 µg/mL), CLDN1, 24-027 (1 µg/mL), β-actin, 1:1000



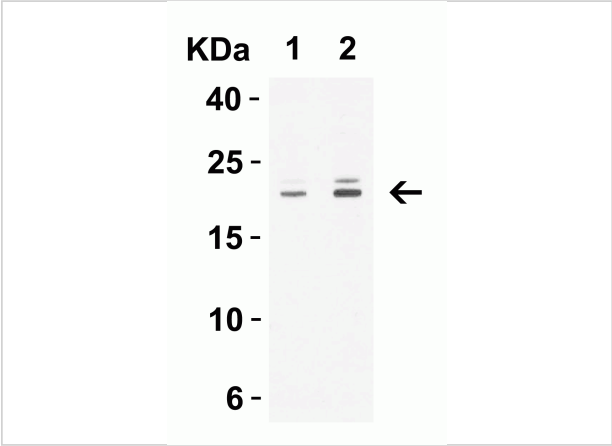
CLDN1 Antibody 2

Figure 2 Western Blot Validation in Human HepG2 Cell Lysate
 Loading: 15 µg of lysates per lane. Antibodies: CLDN1, 5187 (A: 1 µg/mL and B: 2 µg/mL), 1h incubation at RT in 5% NFD...



CLDN1 Antibody 3

Figure 3 Western Blot Validation in Human Tissue Lysates
 Loading: 15 µg of lysates per lane. Antibodies: CLDN1, 5187 (1 µg/mL), 1h incubation at RT in 5% NFD/TBST. Secondary: Go...



CLDN1 Antibody 4

Figure 3 Western Blot Validation in Human Tissue Lysates
 Loading: 15 µg of lysates per lane. Antibodies: CLDN1, 5187 (1 µg/mL), 1h incubation at RT in 5% NFD/TBST. Secondary: Go...

Disclaimer

| | |
|------------|--|
| Disclaimer | Optimal dilutions/concentrations should be determined by the end user. The information provided is a guideline for product use. This product is for research use only. |
|------------|--|

For research use only. For additional information, visit ProSci's [Terms and Conditions Page](#).