

PTER Antibody

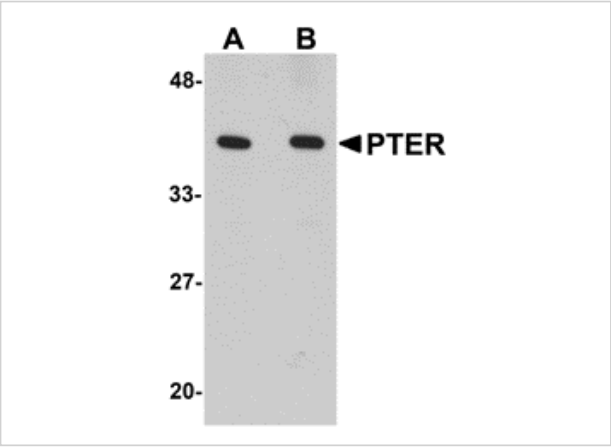
CATALOG NUMBER: 5173

Specifications

Host Species	Rabbit
Species Reactivity	Human, Mouse, Rat
Homology	Predicted species reactivity based on immunogen sequence: Bovine: (88%)
Immunogen	PTER antibody was raised against a 16 amino acid synthetic peptide from near the carboxy terminus of human PTER. The immunogen is located within amino acids 250 - 300 of PTER.
Conjugate	Unconjugated
Tested Applications	ELISA, IHC-P, WB
User Note	Optimal dilutions for each application to be determined by the researcher.

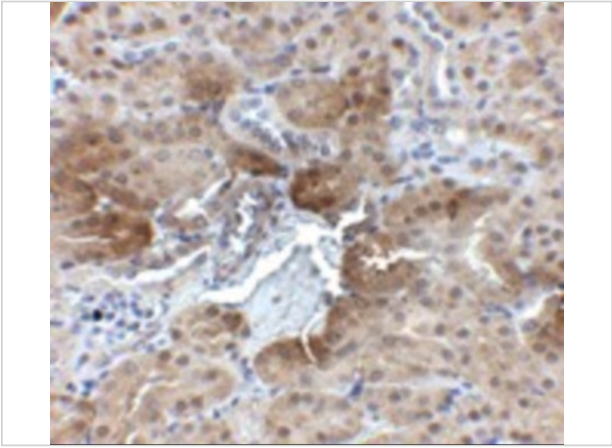
Properties

Purification	PTER Antibody is affinity chromatography purified via peptide column.
Clonality	Polyclonal
Isotype	IgG
Physical State	Liquid
Buffer	PTER Antibody is supplied in PBS containing 0.02% sodium azide.
Concentration	1 mg/mL
Storage Conditions	PTER antibody can be stored at 4°C for three months and -20°C, stable for up to one year. As with all antibodies care should be taken to avoid repeated freeze thaw cycles. Antibodies should not be exposed to prolonged high temperatures.



PTER Antibody 1

Western blot analysis of PTER in human kidney tissue lysate with PTER antibody at (A) 1 and (B) 2 µg/mL.



PTER Antibody 2

Immunohistochemistry of PTER in mouse kidney tissue with PTER antibody at 2.5 µg/mL.

Disclaimer

Disclaimer	Optimal dilutions/concentrations should be determined by the end user. The information provided is a guideline for product use. This product is for research use only.
------------	--

For research use only. For additional information, visit ProSci's [Terms and Conditions Page](#).