

ST3gal6 Antibody

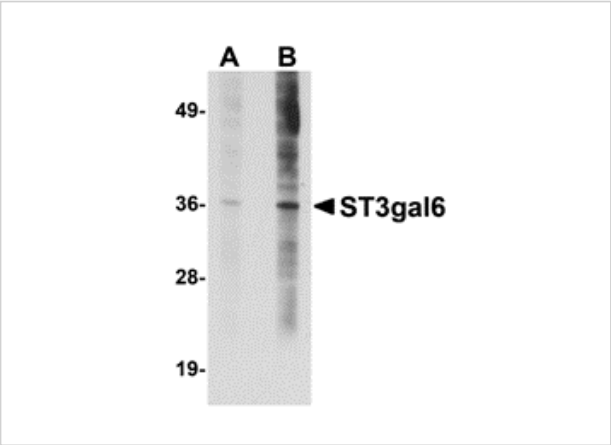
CATALOG NUMBER: 5169

Specifications

Host Species	Rabbit
Species Reactivity	Human, Mouse, Rat
Homology	Predicted species reactivity based on immunogen sequence: Bovine: (100%)
Immunogen	ST3gal6 antibody was raised against a 16 amino acid synthetic peptide from near the carboxy terminus of human ST3gal6. The immunogen is located within amino acids 230 - 280 of ST3gal6.
Conjugate	Unconjugated
Tested Applications	ELISA, ICC, WB
User Note	Optimal dilutions for each application to be determined by the researcher.

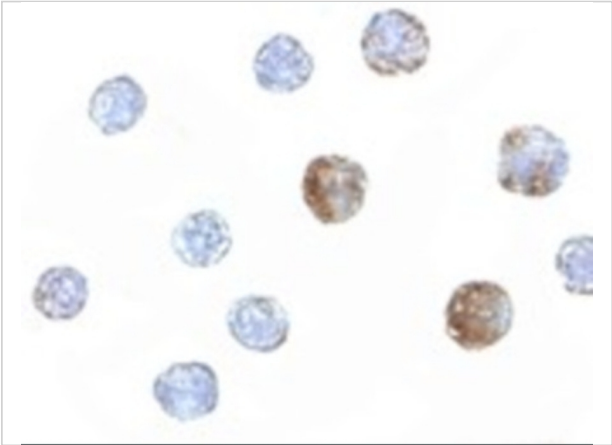
Properties

Purification	ST3gal6 Antibody is affinity chromatography purified via peptide column.
Clonality	Polyclonal
Isotype	IgG
Physical State	Liquid
Buffer	ST3gal6 Antibody is supplied in PBS containing 0.02% sodium azide.
Concentration	1 mg/mL
Storage Conditions	ST3gal6 antibody can be stored at 4°C for three months and -20°C, stable for up to one year. As with all antibodies care should be taken to avoid repeated freeze thaw cycles. Antibodies should not be exposed to prolonged high temperatures.



ST3gal6 Antibody 1

Western blot analysis of ST3gal6 in HeLa cell lysate with ST3gal6 antibody at (A) 1 and (B) 2 µg/mL.



ST3gal6 Antibody 2

Immunocytochemistry of ST3gal6 in HeLa cells with ST3gal6 antibody at 5 µg/mL.

Disclaimer

Disclaimer	Optimal dilutions/concentrations should be determined by the end user. The information provided is a guideline for product use. This product is for research use only.
------------	--

For research use only. For additional information, visit ProSci's [Terms and Conditions Page](#).