

SCF Antibody

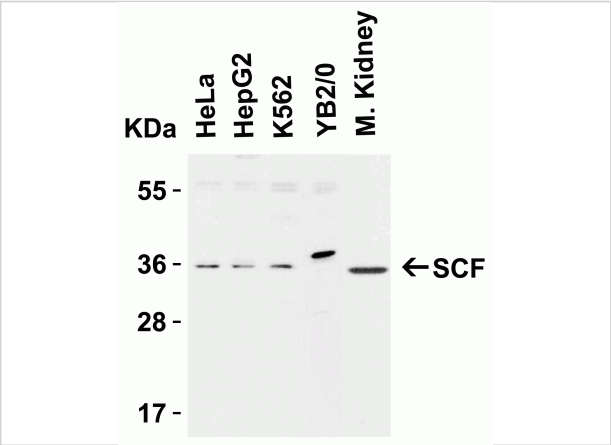
CATALOG NUMBER: 5165

Specifications

Host Species	Rabbit
Species Reactivity	Human, Mouse, Rat
Homology	Predicted species reactivity based on immunogen sequence: Bovine: (71%)
Immunogen	Anti-SCF antibody (5165) was raised against a peptide corresponding to 18 amino acids near the center of human SCF. The immunogen is located within amino acids 100-150 of SCF.
Conjugate	Unconjugated
Tested Applications	ELISA, IF, IHC-P, WB
User Note	Optimal dilutions for each application to be determined by the researcher.
Predicted Molecular Weight	Predicted: 31kD Observed: 36 kD (31kD + 4 N-linked Glycosylations)

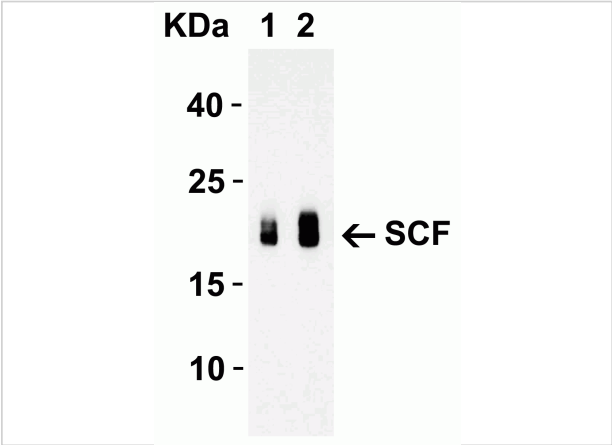
Properties

Purification	SCF Antibody is affinity chromatography purified via peptide column.
Clonality	Polyclonal
Isotype	IgG
Physical State	Liquid
Buffer	SCF Antibody is supplied in PBS containing 0.02% sodium azide.
Concentration	1 mg/mL
Storage Conditions	SCF antibody can be stored at 4°C for three months and -20°C, stable for up to one year. As with all antibodies care should be taken to avoid repeated freeze thaw cycles. Antibodies should not be exposed to prolonged high temperatures.



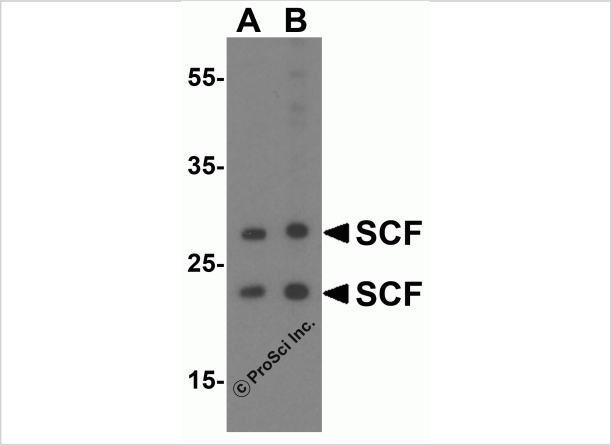
SCF Antibody 1

Figure 1 Western Blot Validation in Cell Lines and Tissues of Human, Mouse and Rat
Loading: 15 µg of lysates per lane. Antibodies: SCF 5165 (1 µg/mL), 1h incubation at RT in 5%...



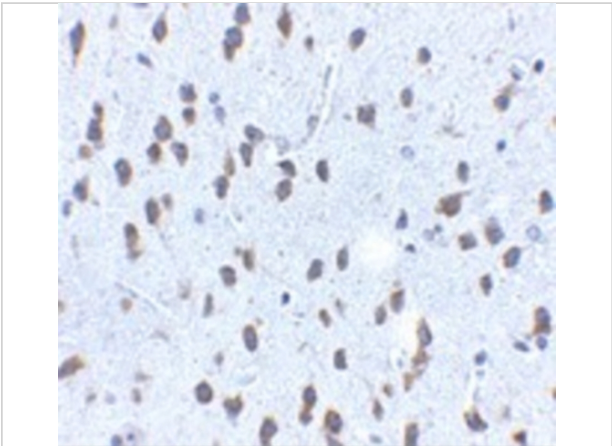
SCF Antibody 2

Figure 2 Western Blot Validation with Recombinant Protein
Loading: 30 ng of human SCF recombinant protein per lane. Antibodies: SCF 5165 (Lane 1: 1 µg/mL and Lane 2: 2 µg/mL), 1h...



SCF Antibody 3

Figure 3 Western Blot Validation in Human HeLa Cell Lines
Loading: 15 µg of lysates per lane. Antibodies: SCF 5165 (2 µg/mL), 1h incubation at RT in 5% NFDm/TBST. Secondary: Goat ...



SCF Antibody 4

Figure 4 Immunohistochemistry Validation of SCF in Mouse Brain Tissue
Immunohistochemical analysis of paraffin-embedded mouse brain tissue using anti-SCF antibody (5165) at 2...

Disclaimer

Disclaimer	Optimal dilutions/concentrations should be determined by the end user. The information provided is a guideline for product use. This product is for research use only.
------------	--

For research use only. For additional information, visit ProSci's [Terms and Conditions Page](#).