

MATN1 Antibody

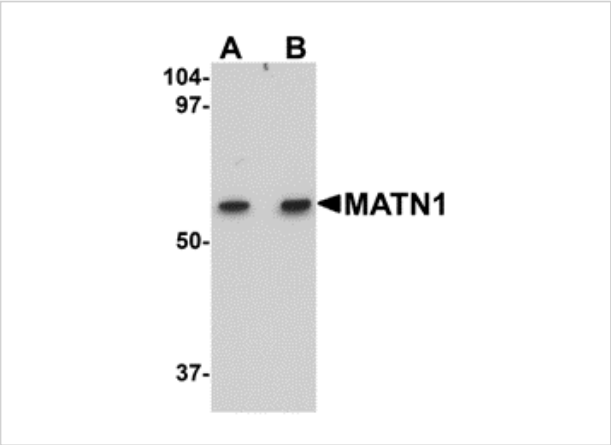
CATALOG NUMBER: 5125

Specifications

Host Species	Rabbit
Species Reactivity	Human, Mouse, Rat
Homology	Predicted species reactivity based on immunogen sequence: Chicken: (92%)
Immunogen	MATN1 antibody was raised against a 13 amino acid synthetic peptide from near the carboxy terminus of human MATN1. The immunogen is located within amino acids 370 - 420 of MATN1.
Conjugate	Unconjugated
Tested Applications	ELISA, IF, IHC-P, WB
User Note	Optimal dilutions for each application to be determined by the researcher.

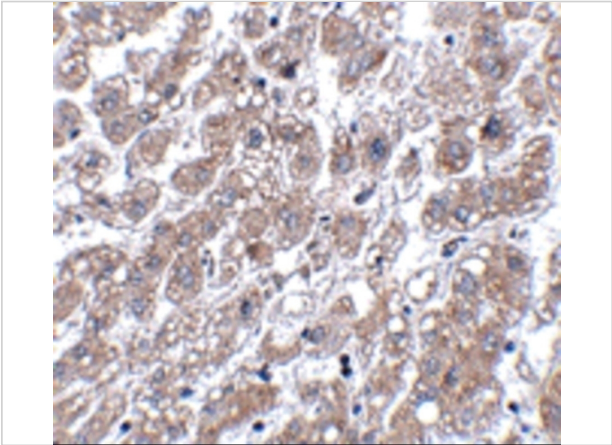
Properties

Purification	MATN1 Antibody is affinity chromatography purified via peptide column.
Clonality	Polyclonal
Isotype	IgG
Physical State	Liquid
Buffer	MATN1 Antibody is supplied in PBS containing 0.02% sodium azide.
Concentration	1 mg/mL
Storage Conditions	MATN1 antibody can be stored at 4°C for three months and -20°C, stable for up to one year. As with all antibodies care should be taken to avoid repeated freeze thaw cycles. Antibodies should not be exposed to prolonged high temperatures.



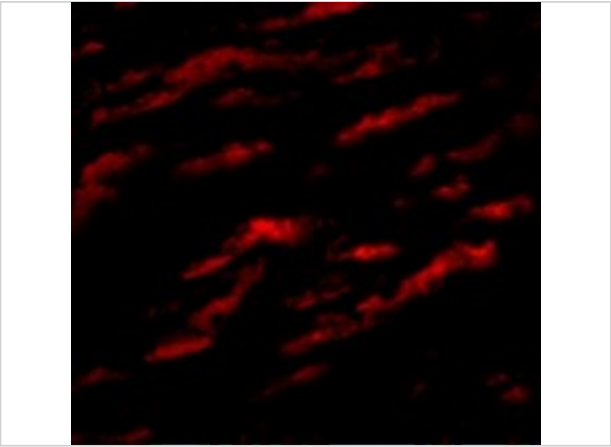
MATN1 Antibody 1

Western blot analysis of MATN1 in rat liver tissue lysate with MATN1 antibody at (A) 1 and (B) 2 µg/mL.



MATN1 Antibody 2

Immunohistochemistry of MATN1 in human liver tissue with MATN1 antibody at 5 µg/mL.



MATN1 Antibody 3

Immunofluorescence of MATN1 in Human Liver cells with MATN1 antibody at 20 µg/mL.

Disclaimer

Disclaimer	Optimal dilutions/concentrations should be determined by the end user. The information provided is a guideline for product use. This product is for research use only.
-------------------	--

For research use only. For additional information, visit ProSci's [Terms and Conditions Page](#).