

Norrin Antibody

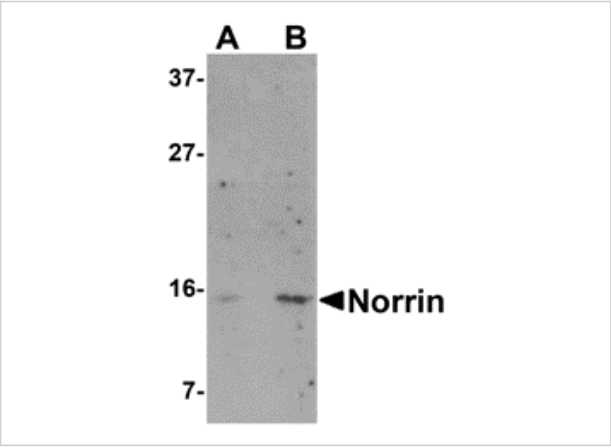
CATALOG NUMBER: 5119

Specifications

Host Species	Rabbit
Species Reactivity	Human
Homology	Predicted species reactivity based on immunogen sequence: Bovine: (83%), Mouse: (93%)
Immunogen	Norrin antibody was raised against an 18 amino acid synthetic peptide from near the amino terminus of human Norrin. The immunogen is located within the first 50 amino acids of Norrin.
Conjugate	Unconjugated
Tested Applications	ELISA, ICC, WB
User Note	Optimal dilutions for each application to be determined by the researcher.

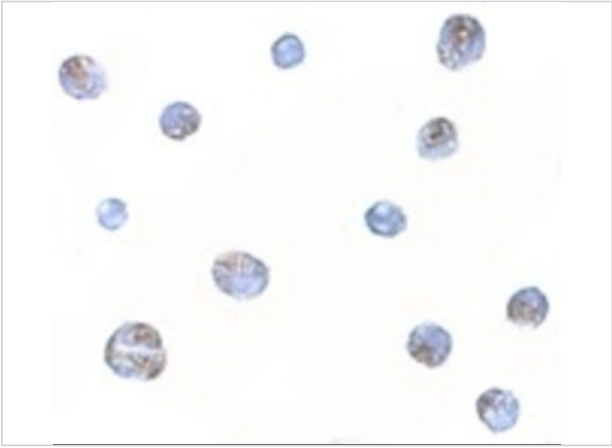
Properties

Purification	Norrin Antibody is affinity chromatography purified via peptide column.
Clonality	Polyclonal
Isotype	IgG
Physical State	Liquid
Buffer	Norrin Antibody is supplied in PBS containing 0.02% sodium azide.
Concentration	1 mg/mL
Storage Conditions	Norrin antibody can be stored at 4°C for three months and -20°C, stable for up to one year. As with all antibodies care should be taken to avoid repeated freeze thaw cycles. Antibodies should not be exposed to prolonged high temperatures.



Norrin Antibody 1

Western blot analysis of Norrin in Jurkat cell lysate with Norrin antibody at (A) 1 and (B) 2 µg/mL.



Norrin Antibody 2

Immunocytochemistry of Norrin in Jurkat cells with Norrin antibody at 5 µg/mL.

Disclaimer

Disclaimer	Optimal dilutions/concentrations should be determined by the end user. The information provided is a guideline for product use. This product is for research use only.
------------	--

For research use only. For additional information, visit ProSci's [Terms and Conditions Page](#).