

MATN4 Antibody

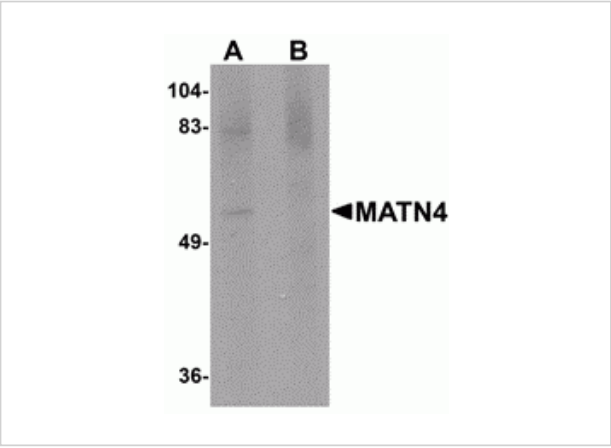
CATALOG NUMBER: 5115

Specifications

Host Species	Rabbit
Species Reactivity	Human, Mouse, Rat
Immunogen	MATN4 antibody was raised against a 13 amino acid synthetic peptide near the amino terminus of human MATN4. The immunogen is located within amino acids 110 - 160 of MATN4.
Conjugate	Unconjugated
Tested Applications	ELISA, IF, IHC-P, WB
User Note	Optimal dilutions for each application to be determined by the researcher.

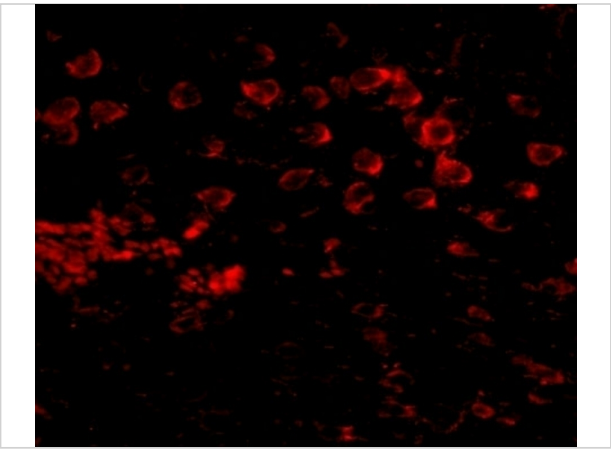
Properties

Purification	MATN4 Antibody is affinity chromatography purified via peptide column.
Clonality	Polyclonal
Isotype	IgG
Physical State	Liquid
Buffer	MATN4 Antibody is supplied in PBS containing 0.02% sodium azide.
Concentration	1 mg/mL
Storage Conditions	MATN4 antibody can be stored at 4°C for three months and -20°C, stable for up to one year. As with all antibodies care should be taken to avoid repeated freeze thaw cycles. Antibodies should not be exposed to prolonged high temperatures.



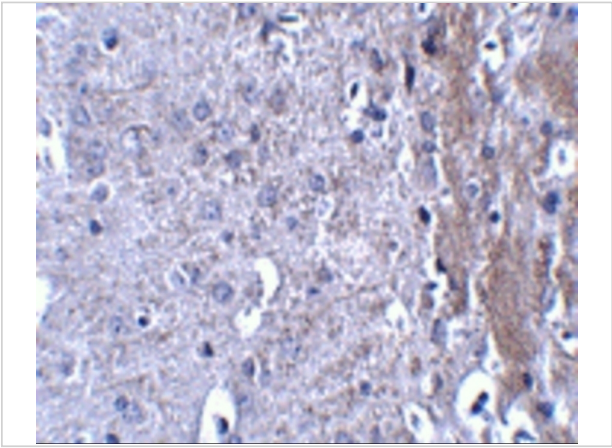
MATN4 Antibody 1

Western blot analysis of MATN4 in rat brain tissue lysate with MATN4 antibody at 1 µg/mL in (A) the absence and (B) the presence of blocking peptide.



MATN4 Antibody 3

Immunofluorescence of MATN4 in mouse brain tissue with MATN4 antibody at 20 µg/mL.



MATN4 Antibody 2

Immunohistochemistry of MATN4 in mouse brain tissue with MATN4 antibody at 2.5 µg/mL.

Disclaimer

Disclaimer	Optimal dilutions/concentrations should be determined by the end user. The information provided is a guideline for product use. This product is for research use only.
-------------------	--

For research use only. For additional information, visit ProSci's [Terms and Conditions Page](#).