

Bora Antibody

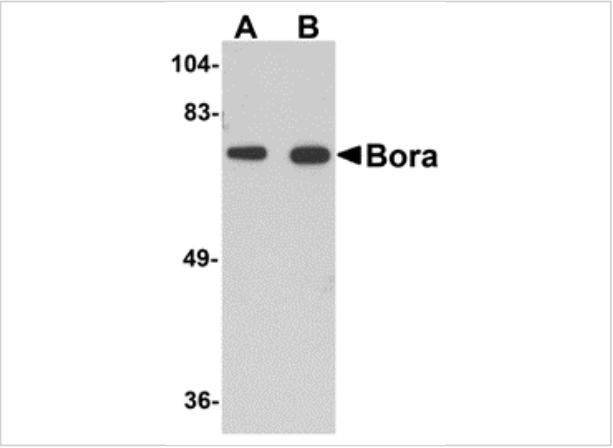
CATALOG NUMBER: 5107

Specifications

Host Species	Rabbit
Species Reactivity	Human, Mouse, Rat
Immunogen	Bora antibody was raised against a 15 amino acid synthetic peptide from near the carboxy terminus of human Bora. The immunogen is located within amino acids 410 - 460 of Bora.
Conjugate	Unconjugated
Tested Applications	ELISA, IF, IHC-P, WB
User Note	Optimal dilutions for each application to be determined by the researcher.

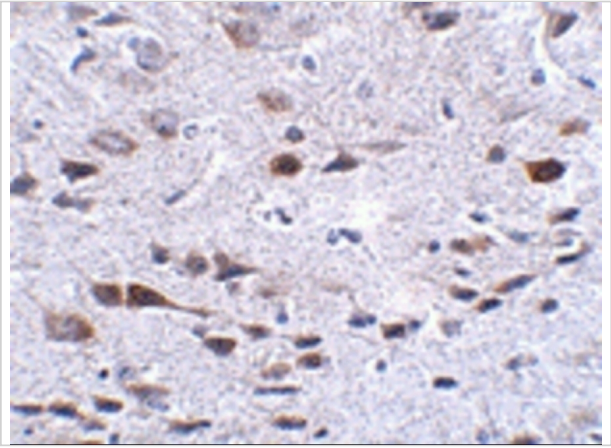
Properties

Purification	Bora Antibody is affinity chromatography purified via peptide column.
Clonality	Polyclonal
Isotype	IgG
Physical State	Liquid
Buffer	Bora Antibody is supplied in PBS containing 0.02% sodium azide.
Concentration	1 mg/mL
Storage Conditions	Bora antibody can be stored at 4°C for three months and -20°C, stable for up to one year. As with all antibodies care should be taken to avoid repeated freeze thaw cycles. Antibodies should not be exposed to prolonged high temperatures.



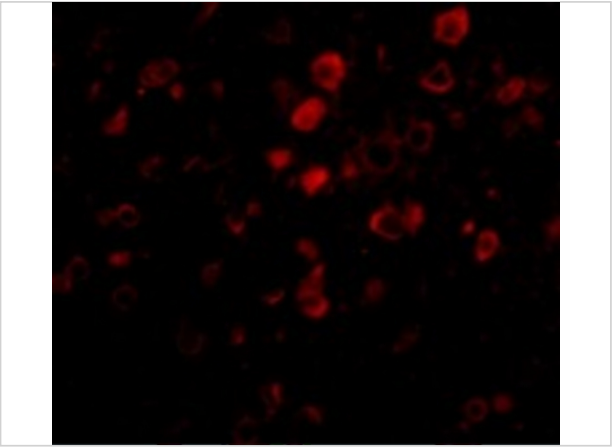
Bora Antibody 1

Western blot analysis of Bora in mouse brain tissue lysate with Bora antibody at (A) 1 and (B) 2 µg/mL.



Bora Antibody 2

Immunohistochemistry of Bora in mouse brain tissue with Bora antibody at 2.5 µg/mL.



Bora Antibody 3

Immunofluorescence of Bora in Mouse Brain cells with Bora antibody at 20 µg/mL.

Disclaimer

Disclaimer	Optimal dilutions/concentrations should be determined by the end user. The information provided is a guideline for product use. This product is for research use only.
------------	--

For research use only. For additional information, visit ProSci's [Terms and Conditions Page](#).