

## ApoA1 Antibody

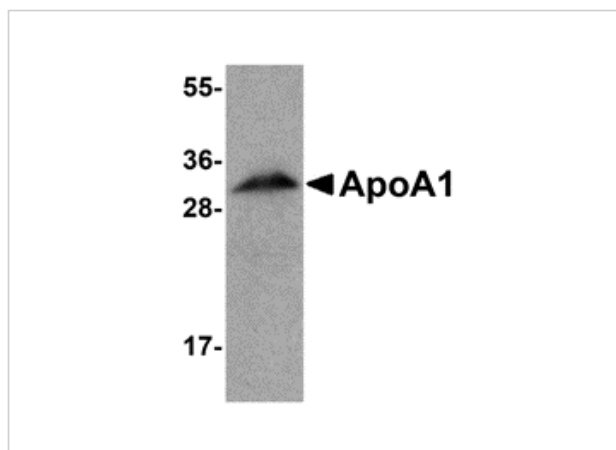
CATALOG NUMBER: 5097

### Specifications

Host Species	Chicken
Species Reactivity	Human, Mouse, Rat
Homology	Predicted species reactivity based on immunogen sequence: Pig: (83%), Bovine: (78%), Chicken: (71%)
Immunogen	ApoA1 antibody was raised against a 17 amino acid synthetic peptide from near the amino terminus of human ApoA1. The immunogen is located within the first 50 amino acids of ApoA1.
Conjugate	Unconjugated
Tested Applications	ELISA, IF, WB
User Note	Optimal dilutions for each application to be determined by the researcher.

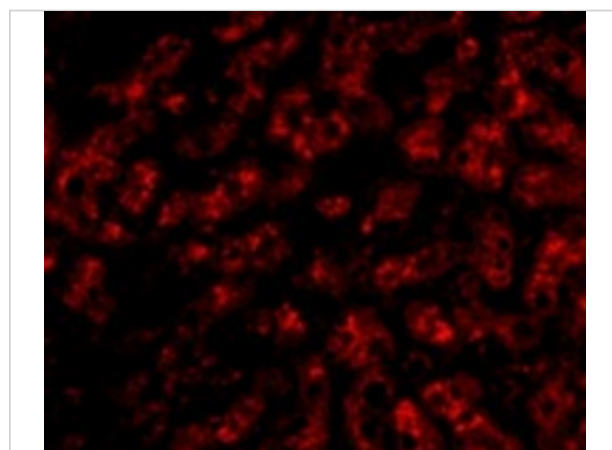
### Properties

Purification	ApoA1 Antibody is affinity chromatography purified via peptide column.
Clonality	Polyclonal
Isotype	IgY
Physical State	Liquid
Buffer	ApoA1 Antibody is supplied in PBS containing 0.02% sodium azide.
Concentration	1 mg/mL
Storage Conditions	ApoA1 antibody can be stored at 4°C for three months and -20°C, stable for up to one year. As with all antibodies care should be taken to avoid repeated freeze thaw cycles. Antibodies should not be exposed to prolonged high temperatures.



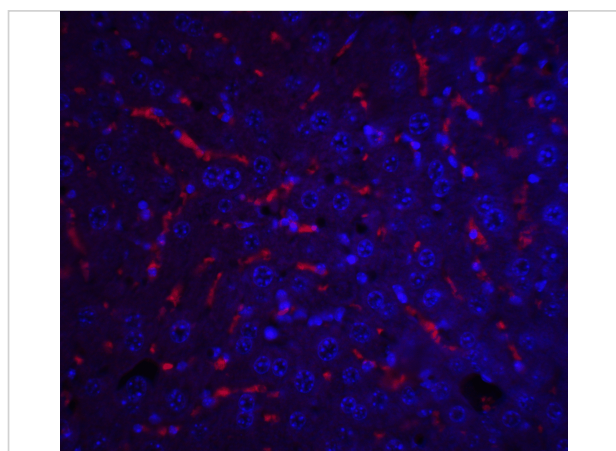
### ApoA1 Antibody 1

Western blot analysis of ApoA1 in human liver tissue lysate with ApoA1 antibody at 1 µg/mL.



### ApoA1 Antibody 2

Immunofluorescence of ApoA1 in human liver tissue with ApoA1 antibody at 20 µg/mL.



### ApoA1 Antibody 3

Immunofluorescence of ApoA1 in mouse liver tissue with ApoA1 antibody at 20 µg/mL.

Red: ApoA1 Antibody (5097)  
Blue: DAPI staining

## Disclaimer

#### Disclaimer

Optimal dilutions/concentrations should be determined by the end user. The information provided is a guideline for product use. This product is for research use only.

For research use only. For additional information, visit ProSci's [Terms and Conditions Page](#).