



ProSci Incorporated
12170 Flint Place
Poway, CA 92064, USA
prosci-inc.com

P: +1 (888) 513-9525
Local: +1 (858) 513-2638
Fax: +1 (858) 513-2692

customercare@prosci-inc.com
techsupport@prosci-inc.com

KCTD15 Antibody

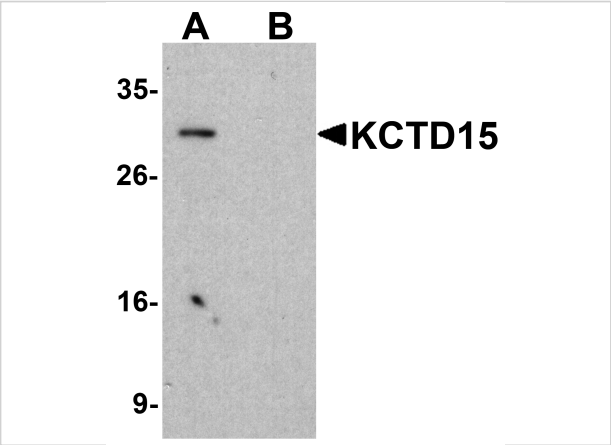
CATALOG NUMBER: 5085

Specifications

Host Species	Rabbit
Species Reactivity	Human, Mouse, Rat
Homology	Predicted species reactivity based on immunogen sequence: Bovine: (100%)
Immunogen	KCTD15 antibody was raised against a 16 amino acid synthetic peptide near the carboxy terminus of human KCTD15. The immunogen is located within the last 50 amino acids of KCTD15.
Conjugate	Unconjugated
Tested Applications	ELISA, IF, IHC-P, WB
User Note	Optimal dilutions for each application to be determined by the researcher.

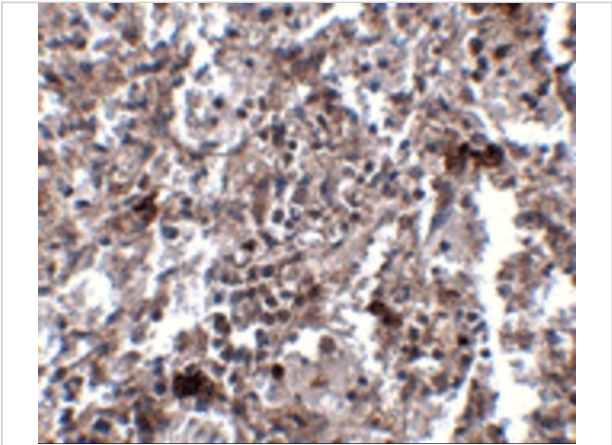
Properties

Purification	KCTD15 Antibody is affinity chromatography purified via peptide column.
Clonality	Polyclonal
Isotype	IgG
Physical State	Liquid
Buffer	KCTD15 Antibody is supplied in PBS containing 0.02% sodium azide.
Concentration	1 mg/mL
Storage Conditions	KCTD15 antibody can be stored at 4°C for three months and -20°C, stable for up to one year. As with all antibodies care should be taken to avoid repeated freeze thaw cycles. Antibodies should not be exposed to prolonged high temperatures.



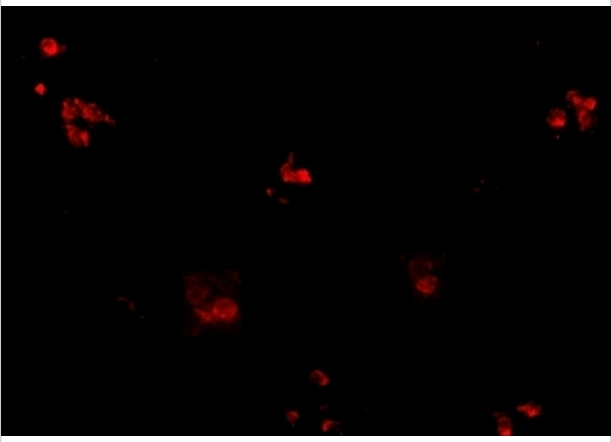
KCTD15 Antibody 1

Western blot analysis of KCTD15 in HeLa cell lysate with KCTD15 antibody at 1 µg/ml in (A) the absence and (B) the presence of blocking buffer.



KCTD15 Antibody 2

Immunohistochemistry of KCTD15 in human spleen tissue with KCTD15 antibody at 2.5 µg/mL.



KCTD15 Antibody 3

Immunofluorescence of KCTD15 in human spleen tissue with KCTD15 antibody at 20 µg/mL.

Disclaimer

Disclaimer	Optimal dilutions/concentrations should be determined by the end user. The information provided is a guideline for product use. This product is for research use only.
------------	--

For research use only. For additional information, visit ProSci's [Terms and Conditions Page](#).