

LRFN2 Antibody

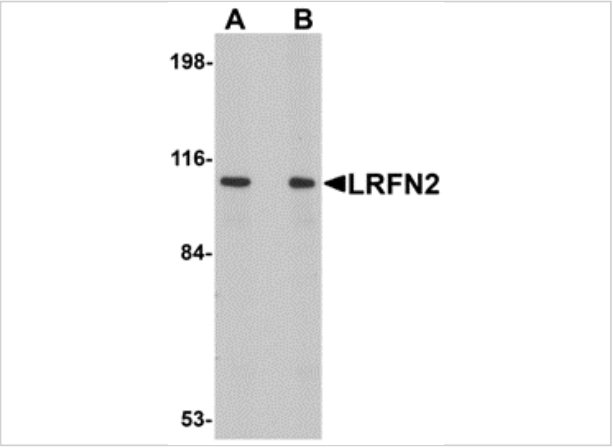
CATALOG NUMBER: 5067

Specifications

Host Species	Rabbit
Species Reactivity	Human, Mouse, Rat
Immunogen	LRFN2 antibody was raised against a 14 amino acid synthetic peptide near the carboxy terminus of human LRFN2. The immunogen is located within amino acids 700 - 750 of LRFN2.
Conjugate	Unconjugated
Tested Applications	ELISA, IF, IHC-P, WB
User Note	Optimal dilutions for each application to be determined by the researcher.
Specificity	At least two isoforms of LRFN2 are known to exist. This antibody is predicted to not cross-react with other members of the LRFN family.
Predicted Molecular Weight	Predicted: 90 kDa Observed: 100 kDa

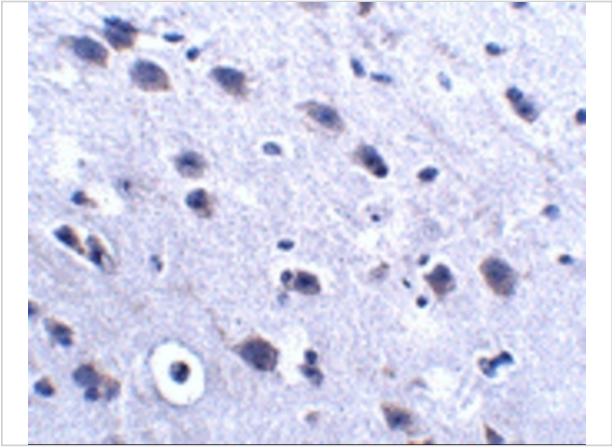
Properties

Purification	LRFN2 Antibody is affinity chromatography purified via peptide column.
Clonality	Polyclonal
Isotype	IgG
Physical State	Liquid
Buffer	LRFN2 Antibody is supplied in PBS containing 0.02% sodium azide.
Concentration	1 mg/mL
Storage Conditions	LRFN2 antibody can be stored at 4°C for three months and -20°C, stable for up to one year. As with all antibodies care should be taken to avoid repeated freeze thaw cycles. Antibodies should not be exposed to prolonged high temperatures.



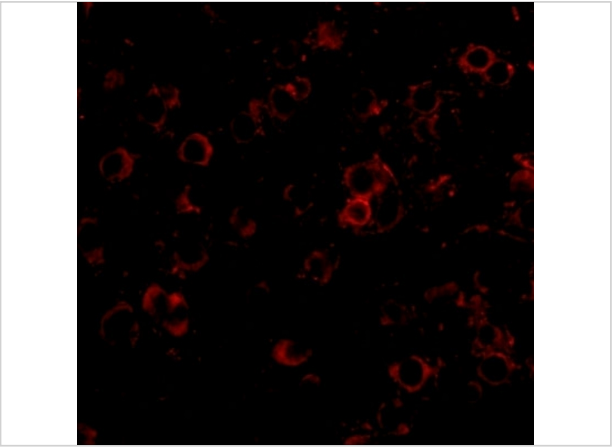
LRFN2 Antibody 1

Western blot analysis of LRFN2 in rat brain lysate with LRFN2 antibody at (A) 1 and (B) 2 µg/mL.



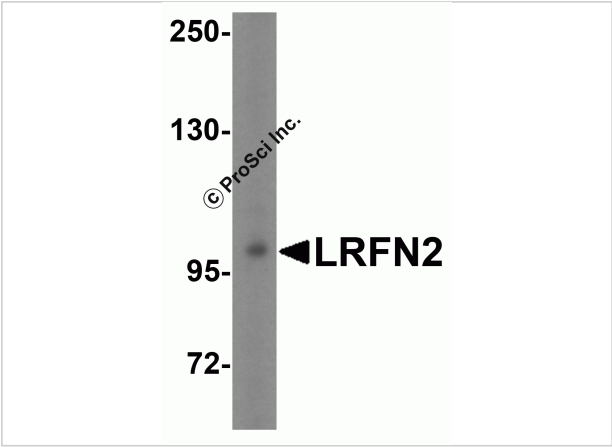
LRFN2 Antibody 2

Immunohistochemistry of LRFN2 in mouse brain tissue with LRFN2 antibody at 2.5 µg/mL.



LRFN2 Antibody 3

Immunofluorescence of LRFN2 in mouse brain tissue with LRFN2 antibody at 20 µg/mL.



LRFN2 Antibody 4

Western blot analysis of LRFN2 expression in mouse brain tissue lysate with LRFN2 antibody at 1 µg/mL.

Disclaimer

Disclaimer	Optimal dilutions/concentrations should be determined by the end user. The information provided is a guideline for product use. This product is for research use only.
-------------------	--

For research use only. For additional information, visit ProSci's [Terms and Conditions Page](#).