

CDIP Antibody

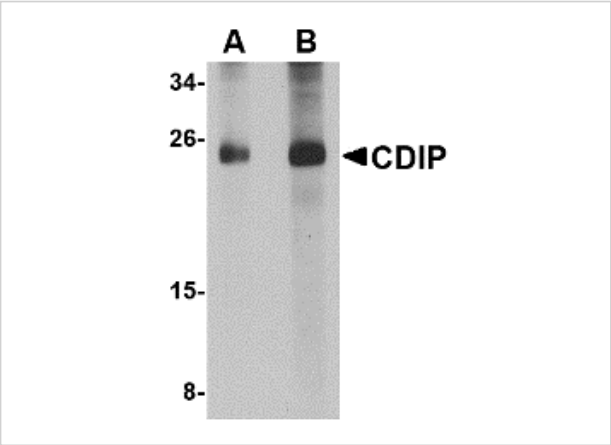
CATALOG NUMBER: 5047

Specifications

Host Species	Rabbit
Species Reactivity	Human, Mouse
Homology	Predicted species reactivity based on immunogen sequence: Bovine: (100%)
Immunogen	CDIP antibody was raised against a 16 amino acid synthetic peptide near the center of human CDIP. The immunogen is located within amino acids 40 - 90 of CDIP.
Conjugate	Unconjugated
Tested Applications	ELISA, IF, IHC-P, WB
User Note	Optimal dilutions for each application to be determined by the researcher.

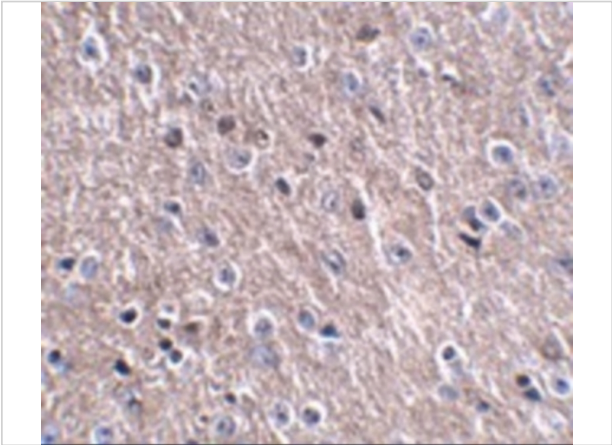
Properties

Purification	CDIP Antibody is affinity chromatography purified via peptide column.
Clonality	Polyclonal
Isotype	IgG
Physical State	Liquid
Buffer	CDIP Antibody is supplied in PBS containing 0.02% sodium azide.
Concentration	1 mg/mL
Storage Conditions	CDIP antibody can be stored at 4°C for three months and -20°C, stable for up to one year. As with all antibodies care should be taken to avoid repeated freeze thaw cycles. Antibodies should not be exposed to prolonged high temperatures.



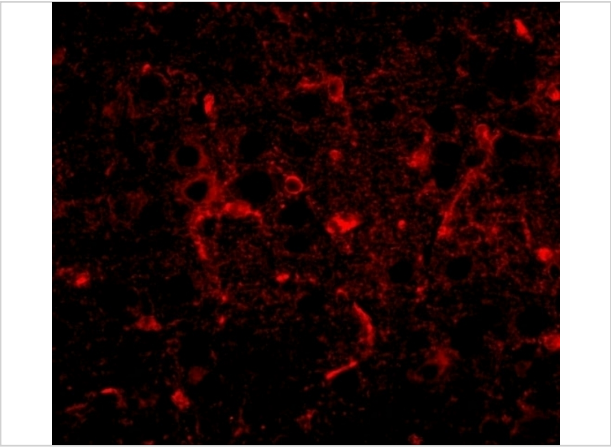
CDIP Antibody 1

Western blot analysis of CDIP in human brain lysate with CDIP antibody at (A) 1 and (B) 2 $\mu\text{g/mL}$.



CDIP Antibody 2

Immunohistochemistry of FNIP2 in mouse brain tissue with FNIP2 antibody at 2.5 $\mu\text{g/mL}$.



CDIP Antibody 3

Immunofluorescence of CDIP1 in mouse brain tissue with CDIP1 antibody at 20 $\mu\text{g/mL}$.

Disclaimer

Disclaimer	Optimal dilutions/concentrations should be determined by the end user. The information provided is a guideline for product use. This product is for research use only.
-------------------	--

For research use only. For additional information, visit ProSci's [Terms and Conditions Page](#).