

SPG11 Antibody

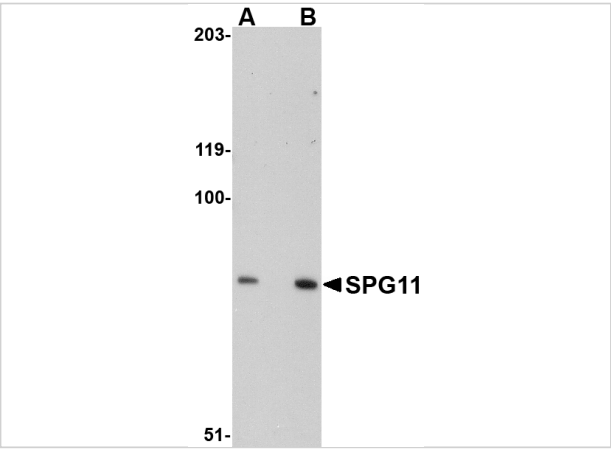
CATALOG NUMBER: 5015

Specifications

Host Species	Rabbit
Species Reactivity	Human, Mouse, Rat
Immunogen	SPG11 antibody was raised against a 15 amino acid synthetic peptide near the carboxy terminus of human SPG11. The immunogen is located within amino acids 2360 - 2410 of SPG11.
Conjugate	Unconjugated
Tested Applications	ELISA, IHC-P, WB
User Note	Optimal dilutions for each application to be determined by the researcher.

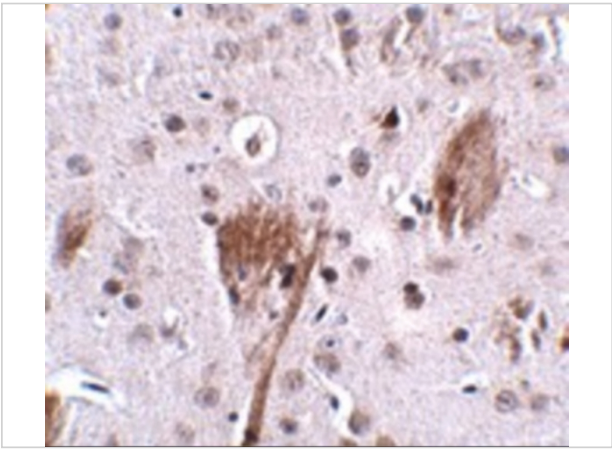
Properties

Purification	SPG11 Antibody is affinity chromatography purified via peptide column.
Clonality	Polyclonal
Isotype	IgG
Physical State	Liquid
Buffer	SPG11 Antibody is supplied in PBS containing 0.02% sodium azide.
Concentration	1 mg/mL
Storage Conditions	SPG11 antibody can be stored at 4°C for three months and -20°C, stable for up to one year. As with all antibodies care should be taken to avoid repeated freeze thaw cycles. Antibodies should not be exposed to prolonged high temperatures.



SPG11 Antibody 1

Western blot analysis of SPG11 in mouse heart tissue lysate with SPG11 antibody at (A) 0.5 and (B) 1 µg/mL.



SPG11 Antibody 2

Immunohistochemistry of SPG11 in mouse brain tissue with SPG11 antibody at 2.5 µg/mL.

Disclaimer

Disclaimer	Optimal dilutions/concentrations should be determined by the end user. The information provided is a guideline for product use. This product is for research use only.
------------	--

For research use only. For additional information, visit ProSci's [Terms and Conditions Page](#).