

Beta-actin Antibody

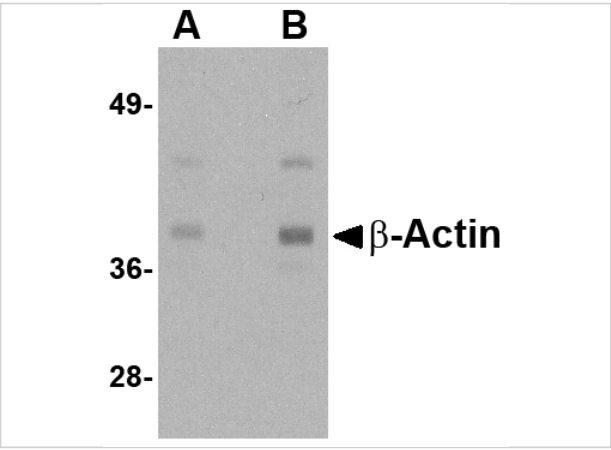
CATALOG NUMBER: 5009

Specifications

Host Species	Chicken
Species Reactivity	Human, Mouse, Rat
Homology	Predicted species reactivity based on immunogen sequence: Sheep: (100%), Pig: (100%), Horse: (100%), Chicken: (100%), Guinea pig: (100%), Bovine: (100%), Rabbit: (100%)
Immunogen	Beta-actin antibody was raised against a 16 amino acid synthetic peptide from near the amino terminus of human beta-actin. The immunogen is located within amino acids 90 - 140 of Beta-actin.
Conjugate	Unconjugated
Tested Applications	ELISA, ICC, WB
User Note	Optimal dilutions for each application to be determined by the researcher.

Properties

Purification	Beta-actin Antibody is affinity chromatography purified via peptide column.
Clonality	Polyclonal
Isotype	IgY
Physical State	Liquid
Buffer	Beta-actin Antibody is supplied in PBS containing 0.02% sodium azide.
Concentration	1 mg/mL
Storage Conditions	Beta-actin antibody can be stored at 4°C for three months and -20°C, stable for up to one year. As with all antibodies care should be taken to avoid repeated freeze thaw cycles. Antibodies should not be exposed to prolonged high temperatures.



Beta-actin Antibody 1

Western blot analysis of actin in HeLa cell lysate with b-actin antibody at (A) 1 and (B) 2 µg/mL.



Beta-actin Antibody 2

Immunocytochemistry of Actin in HeLa cells with Actin antibody at 2 µg/mL.

Disclaimer

Disclaimer	Optimal dilutions/concentrations should be determined by the end user. The information provided is a guideline for product use. This product is for research use only.
------------	--

For research use only. For additional information, visit ProSci's [Terms and Conditions Page](#).