

## OCC-1 Antibody

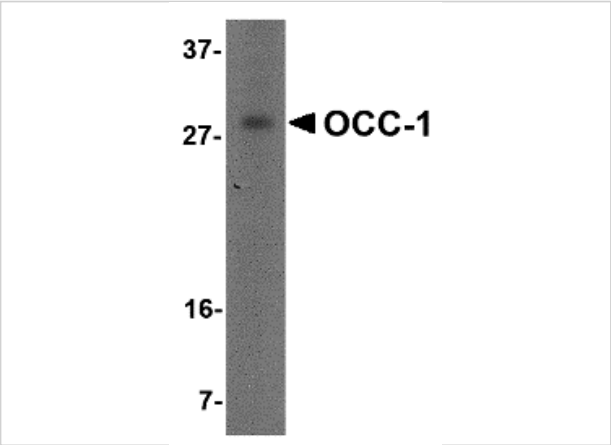
CATALOG NUMBER: 4997

### Specifications

Host Species	Rabbit
Species Reactivity	Human
Immunogen	OCC-1 antibody was raised against a 16 amino acid synthetic peptide near the amino terminus of human OCC-1. The immunogen is located within amino acids 10 - 60 of OCC-1.
Conjugate	Unconjugated
Tested Applications	ELISA, IF, IHC-P, WB
User Note	Optimal dilutions for each application to be determined by the researcher.

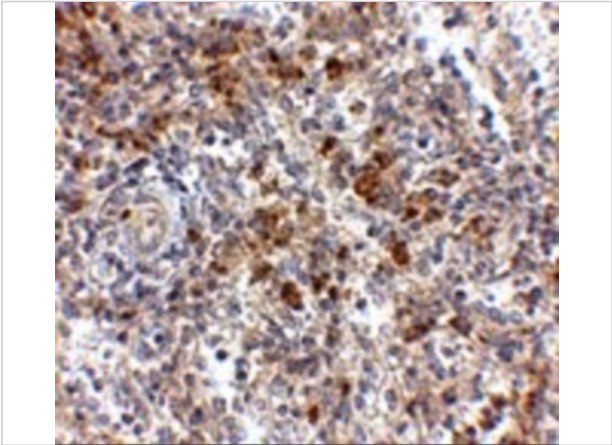
### Properties

Purification	OCC-1 Antibody is affinity chromatography purified via peptide column.
Clonality	Polyclonal
Isotype	IgG
Physical State	Liquid
Buffer	OCC-1 Antibody is supplied in PBS containing 0.02% sodium azide.
Concentration	1 mg/mL
Storage Conditions	OCC-1 antibody can be stored at 4°C for three months and -20°C, stable for up to one year. As with all antibodies care should be taken to avoid repeated freeze thaw cycles. Antibodies should not be exposed to prolonged high temperatures.



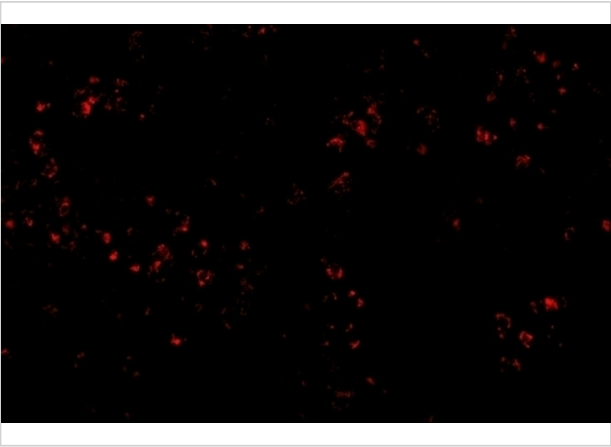
OCC-1 Antibody 1

Western blot analysis of OCC-1 in human spleen tissue lysate with OCC-1 antibody at 2 µg/mL.



OCC-1 Antibody 2

Immunohistochemistry of OCC-1 in human spleen tissue with OCC-1 antibody at 2.5 µg/mL.



OCC-1 Antibody 3

Immunofluorescence of OCC-1 in human spleen tissue with OCC-1 antibody at 20 µg/mL.

Disclaimer

Disclaimer	Optimal dilutions/concentrations should be determined by the end user. The information provided is a guideline for product use. This product is for research use only.
------------	--

For research use only. For additional information, visit ProSci's [Terms and Conditions Page](#).