

IL-16 Antibody

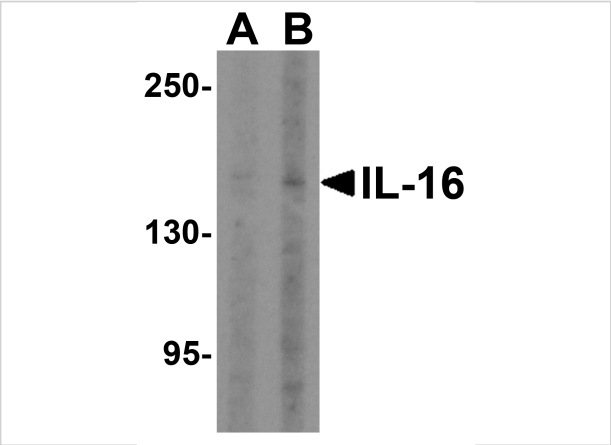
CATALOG NUMBER: 4995

Specifications

Host Species	Rabbit
Species Reactivity	Human, Mouse, Rat
Immunogen	IL-16 antibody was raised against a 14 amino acid synthetic peptide near the amino terminus of human IL-16. The immunogen is located within amino acids 140 - 190 of IL-16.
Conjugate	Unconjugated
Tested Applications	ELISA, IF, IHC-P, WB
User Note	Optimal dilutions for each application to be determined by the researcher.
Specificity	This antibody will only detect the NIL-16 isoform.
Predicted Molecular Weight	Predicted: 145 kDa Observed: 160 kDa

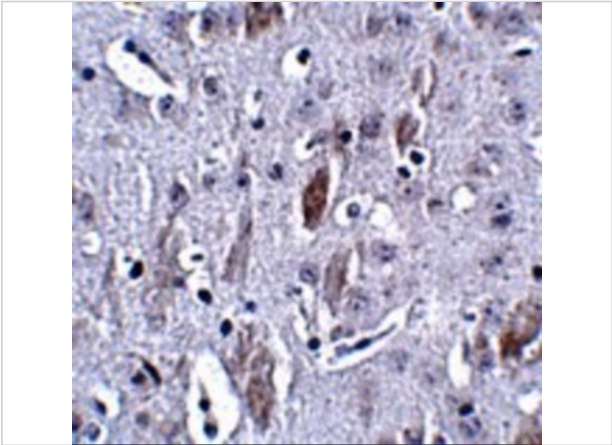
Properties

Purification	IL-16 Antibody is affinity chromatography purified via peptide column.
Clonality	Polyclonal
Isotype	IgG
Physical State	Liquid
Buffer	IL-16 Antibody is supplied in PBS containing 0.02% sodium azide.
Concentration	1 mg/mL
Storage Conditions	IL-16 antibody can be stored at 4°C for three months and -20°C, stable for up to one year. As with all antibodies care should be taken to avoid repeated freeze thaw cycles. Antibodies should not be exposed to prolonged high temperatures.



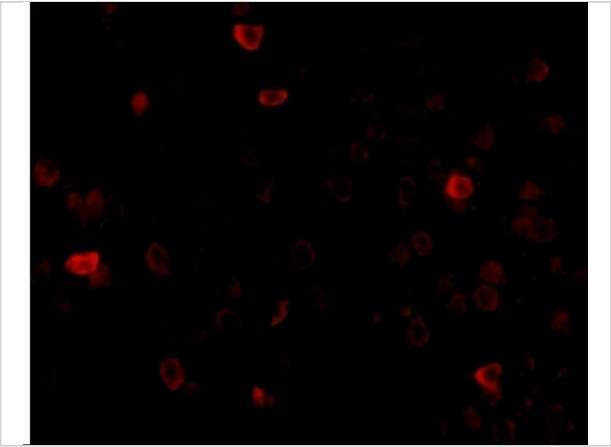
IL-16 Antibody 1

Western blot analysis of IL-16 in rat brain tissue lysate with IL-16 antibody at (A) 2.5 and (B) 5 µg/mL.



IL-16 Antibody 2

Immunohistochemistry of IL-16 in mouse brain tissue with IL-16 antibody at 2.5 µg/mL.



IL-16 Antibody 3

Immunofluorescence of IL-16 in mouse brain tissue with IL-16 antibody at 20 µg/mL.

Disclaimer

Disclaimer	Optimal dilutions/concentrations should be determined by the end user. The information provided is a guideline for product use. This product is for research use only.
------------	--

For research use only. For additional information, visit ProSci's [Terms and Conditions Page](#).