

KLRA3 Antibody

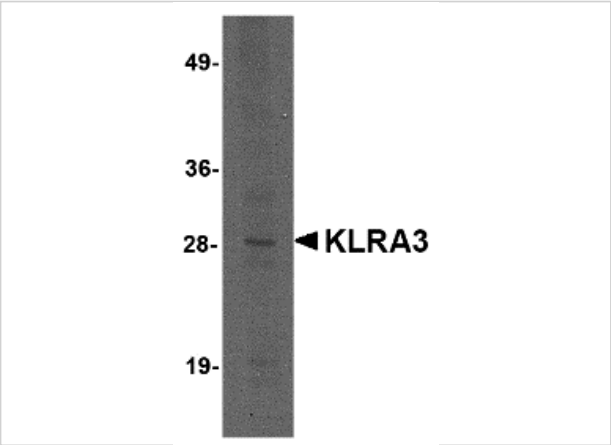
CATALOG NUMBER: 4993

Specifications

Host Species	Rabbit
Species Reactivity	Mouse, Rat
Immunogen	KLRA3 antibody was raised against a 14 amino acid synthetic peptide near the carboxy terminus of mouse KLRA3. The immunogen is located within the last 50 amino acids of KLRA3.
Conjugate	Unconjugated
Tested Applications	ELISA, WB
User Note	Optimal dilutions for each application to be determined by the researcher.
Specificity	This antibody may cross-react with other LY49 receptors.

Properties

Purification	KLRA3 Antibody is affinity chromatography purified via peptide column.
Clonality	Polyclonal
Isotype	IgG
Physical State	Liquid
Buffer	KLRA3 Antibody is supplied in PBS containing 0.02% sodium azide.
Concentration	1 mg/mL
Storage Conditions	KLRA3 antibody can be stored at 4°C for three months and -20°C, stable for up to one year. As with all antibodies care should be taken to avoid repeated freeze thaw cycles. Antibodies should not be exposed to prolonged high temperatures.



KLRA3 Antibody 1

Western blot analysis of KLRA3 in mouse brain tissue lysate with KLRA3 antibody at 2 µg/mL.

Disclaimer

Disclaimer	Optimal dilutions/concentrations should be determined by the end user. The information provided is a guideline for product use. This product is for research use only.
------------	--

For research use only. For additional information, visit ProSci's [Terms and Conditions Page](#).