

MADD Antibody

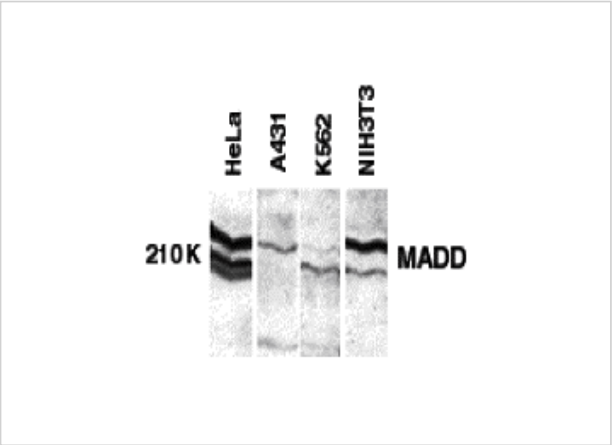
CATALOG NUMBER: 1150

Specifications

Host Species	Rabbit
Species Reactivity	Human, Mouse, Rat
Immunogen	MADD antibody was raised against a peptide corresponding to amino acids near the carboxy terminus of human MADD. The immunogen is located within the last 50 amino acids of MADD.
Conjugate	Unconjugated
Tested Applications	ELISA, ICC, IF, WB
User Note	Optimal dilutions for each application to be determined by the researcher.
Predicted Molecular Weight	200 to 220 kDa

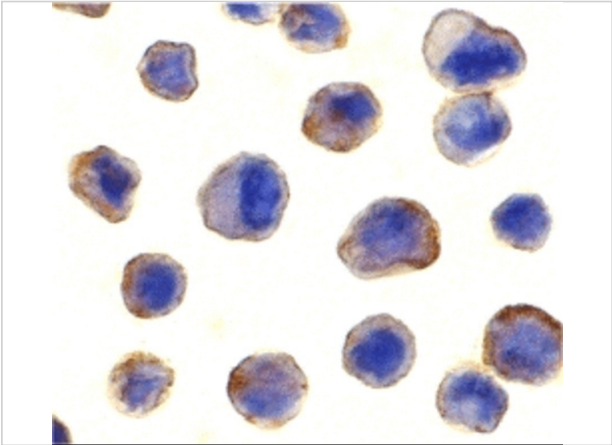
Properties

Purification	MADD Antibody is Antibody is DEAE purified.
Clonality	Polyclonal
Isotype	IgG
Physical State	Liquid
Buffer	MADD Antibody is supplied in PBS containing 0.02% sodium azide.
Concentration	1 mg/ml
Storage Conditions	MADD antibody can be stored at 4°C for three months and -20°C, stable for up to one year. As with all antibodies care should be taken to avoid repeated freeze thaw cycles. Antibodies should not be exposed to prolonged high temperatures.



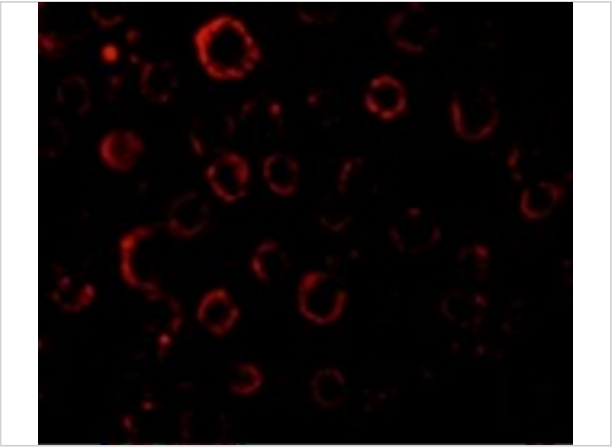
MADD Antibody 1

Western blot analysis of MADD in whole cell lysates from the indicated cell lines with MADD antibody at 1:250 dilution.



MADD Antibody 2

Immunocytochemistry of MADD in human spleen tissue with MADD antibody at 10 µg/mL.



MADD Antibody 3

Immunofluorescence of MADD in HeLa cells with MADD antibody at 20 µg/mL.

Disclaimer

Disclaimer	Optimal dilutions/concentrations should be determined by the end user. The information provided is a guideline for product use. This product is for research use only.
------------	--

For research use only. For additional information, visit ProSci's [Terms and Conditions Page](#).