

GFR alpha 2 Antibody

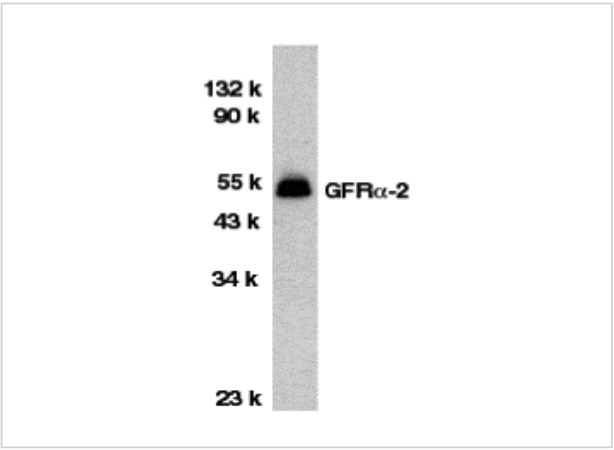
CATALOG NUMBER: 1135

Specifications

Host Species	Rabbit
Species Reactivity	Human, Mouse, Rat
Homology	Predicted species reactivity based on immunogen sequence: Bovine: (93%)
Immunogen	GFR alpha 2 antibody was raised against a 15 amino acid peptide near the center of human GFR alpha 2. The immunogen is located within amino acids 360 - 410 of GFR alpha 2.
Conjugate	Unconjugated
Tested Applications	ELISA, ICC, WB
User Note	Optimal dilutions for each application to be determined by the researcher.
Predicted Molecular Weight	Predicted: 51 kDa Observed: 52 kDa

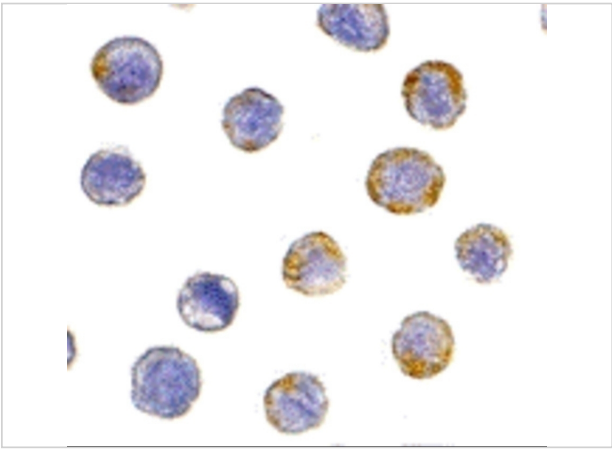
Properties

Purification	GFR alpha 2 Antibody is Ion exchange chromatography purified.
Clonality	Polyclonal
Isotype	IgG
Physical State	Liquid
Buffer	GFR alpha 2 Antibody is supplied in PBS containing 0.02% sodium azide.
Concentration	1 mg/ml
Storage Conditions	GFR alpha 2 antibody can be stored at 4°C for three months and -20°C, stable for up to one year. As with all antibodies care should be taken to avoid repeated freeze thaw cycles. Antibodies should not be exposed to prolonged high temperatures.



GFR alpha 2 Antibody 1

Western blot analysis of GFR alpha 2 in HeLa total cell lysate with GFR alpha 2 antibody at 1 µg/mL.



GFR alpha 2 Antibody 2

Immunocytochemistry of GFR alpha 2 in HeLa cells with GFR alpha 2 antibody at 5 µg/mL.

Disclaimer

Disclaimer	Optimal dilutions/concentrations should be determined by the end user. The information provided is a guideline for product use. This product is for research use only.
------------	--

For research use only. For additional information, visit ProSci's [Terms and Conditions Page](#).