

## GFR alpha 1 Antibody

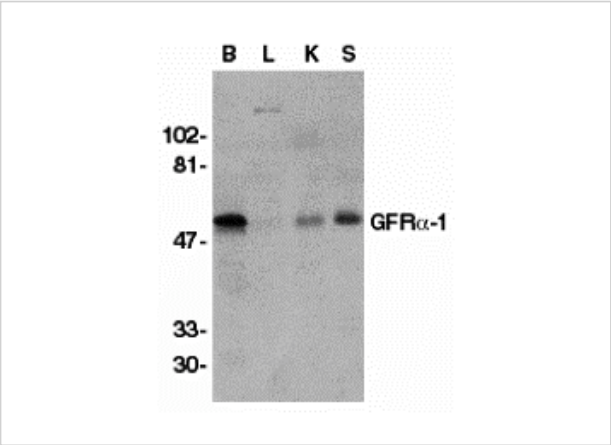
CATALOG NUMBER: 1133

### Specifications

Host Species	Rabbit
Species Reactivity	Human, Mouse, Rat
Immunogen	GFR alpha 1 antibody was raised against a 14 amino acid peptide near the center of human GFR alpha 1. The immunogen is located within amino acids 360 - 410 of GFR alpha 1.
Conjugate	Unconjugated
Tested Applications	ELISA, IF, IHC-P, WB
User Note	Optimal dilutions for each application to be determined by the researcher.
Specificity	GFR alpha 1 antibody is predicted to not cross-react with other members of the GFR alpha family of proteins.
Predicted Molecular Weight	51 kDa

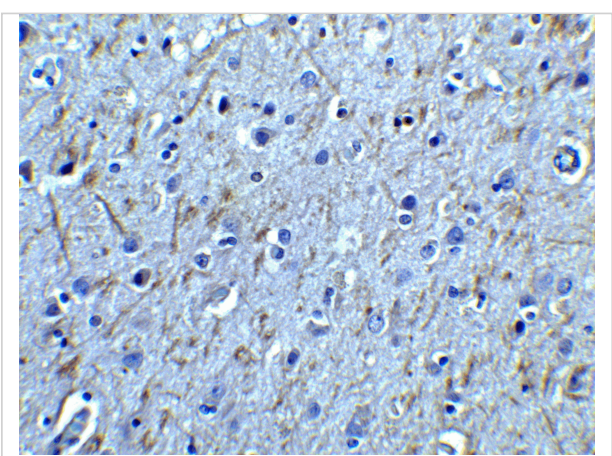
### Properties

Purification	GFR alpha 1 Antibody is Antibody is DEAE purified.
Clonality	Polyclonal
Isotype	IgG
Physical State	Liquid
Buffer	GFR alpha 1 Antibody is supplied in PBS containing 0.02% sodium azide.
Concentration	1 mg/mL
Storage Conditions	GFR alpha 1 antibody can be stored at 4°C up to one year. Antibodies should not be exposed to prolonged high temperatures.



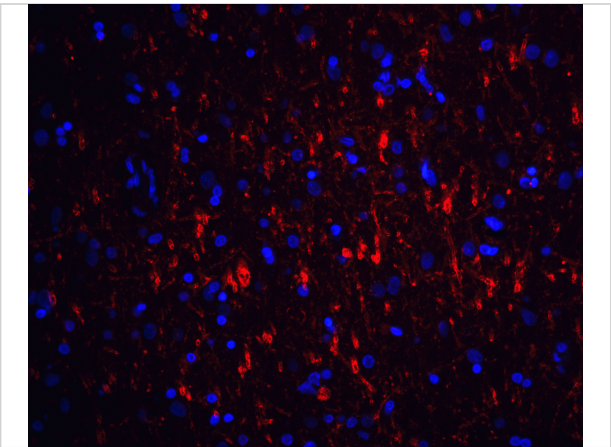
GFR alpha 1 Antibody 1

Western blot analysis of GFR alpha 1 in crude membrane fractions of human brain (B), liver (L), kidney (K), and spleen (S), respectively, with GFR alpha 1 antibody at 1 µg/mL.



GFR alpha 1 Antibody 2

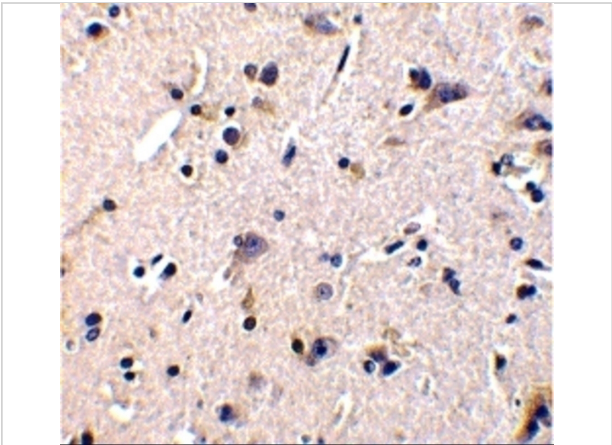
Immunohistochemistry of GFR alpha 1 in human brain tissue with GFR alpha 1 antibody at 2.5 µg/ml.



GFR alpha 1 Antibody 3

Immunofluorescence of GFR alpha 1 in human brain tissue with GFR alpha 1 antibody at 20 µg/mL.

Red: GFR alpha 1 Antibody (1133)  
Blue: DAPI staining



GFR alpha 1 Antibody 4

Immunohistochemistry of GFR alpha 1 in human brain tissue with GFR alpha 1 antibody at 1 µg/mL.

Disclaimer

Disclaimer	Optimal dilutions/concentrations should be determined by the end user. The information provided is a guideline for product use. This product is for research use only.
------------	--

For research use only. For additional information, visit ProSci's [Terms and Conditions Page](#).