

## Eotaxin Antibody

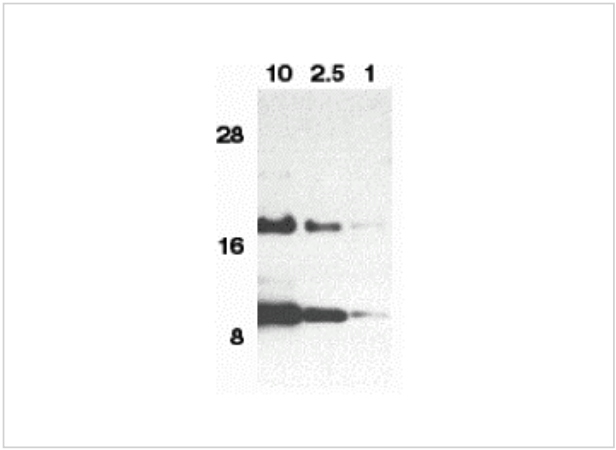
CATALOG NUMBER: 1123

### Specifications

Host Species	Rabbit
Species Reactivity	Human
Homology	Predicted species reactivity based on immunogen sequence: Pig: (80%)
Immunogen	Eotaxin antibody was raised in rabbits against a peptide corresponding to amino acids near the carboxy terminus of human eotaxin. The immunogen is located within the last 50 amino acids of Eotaxin.
Conjugate	Unconjugated
Tested Applications	ELISA, ICC, IF, WB
User Note	Optimal dilutions for each application to be determined by the researcher.
Predicted Molecular Weight	9 - 18 kDa

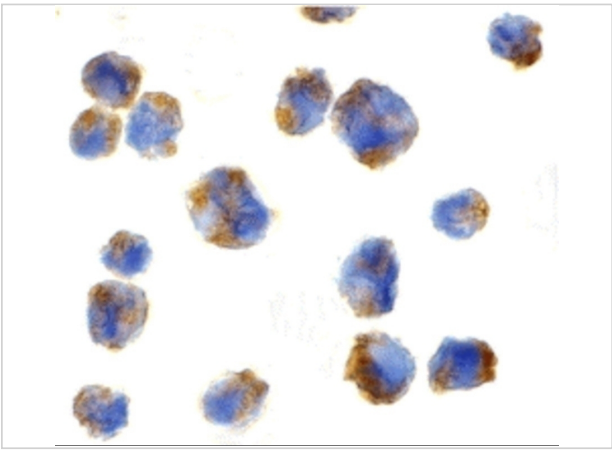
### Properties

Purification	Eotaxin Antibody is Antibody is DEAE purified.
Clonality	Polyclonal
Isotype	IgG
Physical State	Liquid
Buffer	Eotaxin Antibody is supplied in PBS containing 0.02% sodium azide.
Concentration	1 mg/ml
Storage Conditions	Eotaxin antibody can be stored at 4°C for three months and -20°C, stable for up to one year. As with all antibodies care should be taken to avoid repeated freeze thaw cycles. Antibodies should not be exposed to prolonged high temperatures.



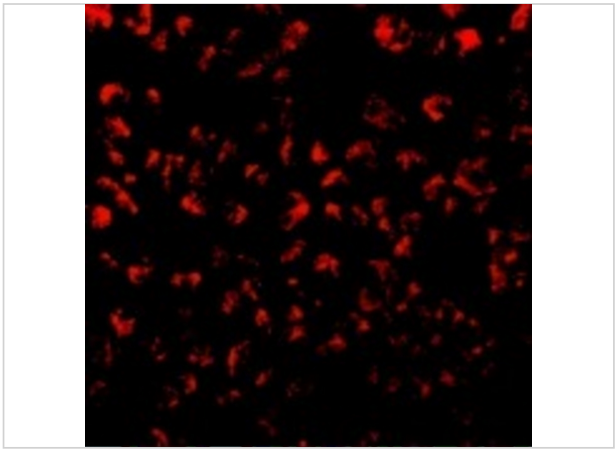
Eotaxin Antibody 1

Western blot analysis of eotaxin in HeLa cell lysate containing 10, 2.5, or 1 ng of full length recombinant eotaxin with eotaxin antibody at 1 µg/mL.



Eotaxin Antibody 2

Immunocytochemistry of Eotaxin in 293 cells with Eotaxin antibody at 5 µg/mL.



Eotaxin Antibody 3

Immunofluorescence of Eotaxin in 293 cells with Eotaxin antibody at 10 µg/mL.

Disclaimer

Disclaimer	Optimal dilutions/concentrations should be determined by the end user. The information provided is a guideline for product use. This product is for research use only.
------------	--

For research use only. For additional information, visit ProSci's [Terms and Conditions Page](#).