

## Full-Range Protein Ladder

Catalog #: 83-650

Lot #: 80361131

Reagent for research use only.

### General Description

Prometheus<sup>®</sup> ProSignal<sup>®</sup> Full-Range Prestained Protein Ladder is a three-color protein standard with 12 pre-stained proteins covering a wide range molecular weights from 10 to 245 kDa. Proteins are covalently coupled with a blue chromophore except for two reference bands (one green and one red band at 25 kDa and 75 kDa respectively) when separated on SDS-PAGE (Tris-glycine buffer). The Prestained Protein Ladder is designed for monitoring protein separation during SDS-polyacrylamide gel electrophoresis, verification of Western transfer efficiency on membranes (PVDF, nylon, or nitrocellulose) and for approximating the size of proteins. The ladder is supplied in gel loading buffer and is ready to use.

### Range

10 to 245 kDa

### Reference Bands

SDS page with Tris-Glycine buffer:

Green at 25 kDa

Red at 75 kDa

### Composition of Storage Buffer

(20 mM Trisphosphate, pH 7.5 at 25°C), 2 % SDS, 0.2 mM Dithiothreitol, 3.6 M Urea, and 15 % (v/v) Glycerol).

### Concentration

Approx. 3 - 3.5 mg/ml of protein  
(0.1 - 0.4 mg/ml of each protein)

### Storage Conditions

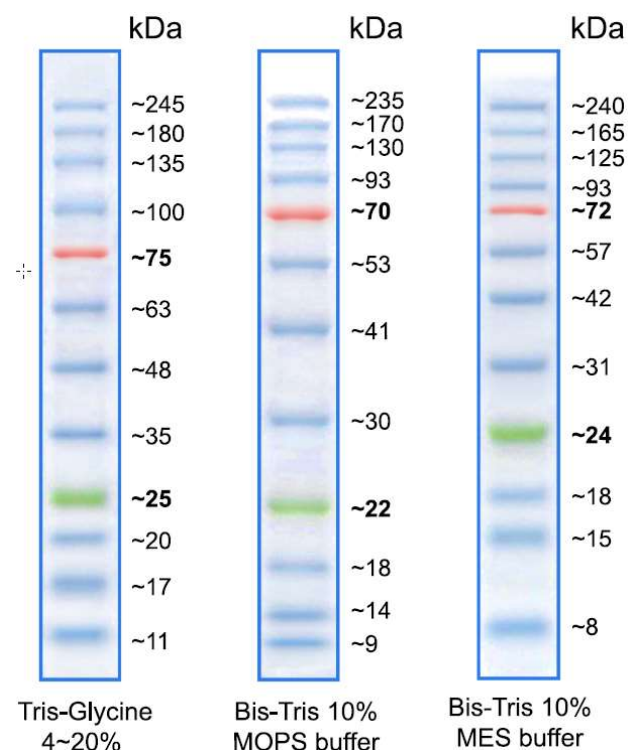
Stable for up to 2 weeks at 25°C. Stable for up to 3 months at 4°C. For long term storage, store at -20°C.

### Pack size

500 µl, at approximately 3-3.5mg/ml concentration  
Sufficient for 100 to >150 loadings when used under recommended conditions.

### Usage

- 3 µl or 5 µl per loading for clear visualization during electrophoresis on 15-well or 10-well mini-gel, respectively.
- 1.5~2.5 µl per well for general Western transferring.
- Apply more for thicker (> 1.5 mm) or larger gel.



8430 Juniper Creek Lane, San Diego, CA 92126  
Phone: 800.789.5550 | Fax: 888.789.0444  
Email: support@geneseesci.com  
www.geneseesci.com

% of migration	Tris Glycine Gel							4-12% Bis Tris Gel		3-8% Tris Acetate
	6 %	8 %	10 %	12 %	14 %	16 %	4-20 %	MOPS	MES	TA
0 %			245	245	245	245				
10 %		245	180	180	135	135			240	
20 %		180	135	100	75	63	245	230	165	235
30 %		135	100	75	63	48	180	170	125	165
40 %	245	100	63	48	35	25	135	130	93	120
50 %	180	75	48	35	25	20	100	93	72	100
60 %	135	63	35	25	20	17	75	70	57	70
70 %	100	48	25	20	17	11	63	53	31	55
80 %	75	35	20	17	11		48	41	24	45
90 %	63	25	17	11			35	30	18	30
100 %		17	11				25	22	15	27
							17	18	11	18
							11	14		15
								9		

## Related Products

### ProSignal™ Pico **NEW!**

- Optimized for chemiluminescent Western blots imaged using X-ray film
- More sensitive than other substrates - detect low-picogram amounts
- Intense signal that lasts for flexible imaging 6+ hours later

Replaces Pierce  
SuperSignal™ West Pico

Cat #	Description	Qty/Unit	List Price	Your Price
20-300	ProSignal™ Pico ECL Reagent, 200ml Kit	2000cm <sup>2</sup>	175.35	149.75
20-300B	ProSignal™ Pico ECL Reagent, 500ml Kit	5000cm <sup>2</sup>	325.15	289.50

### ProSignal™ Pico Spray Bottle **NEW!**

- No measuring or mixing required! Simply spray the blot and image

Cat #	Description	Qty/Unit	List Price	Your Price
20-300S	ProSignal™ Pico ECL Spray, 500ml Kit	5000cm <sup>2</sup>	325.15	289.50



Try a **FREE**  
Sample Today!

### ProSignal™ Dura **NEW!**

- The new standard for sensitivity and quantitative ability
- Takes full advantage of the linear dynamic range of CCD imagers
- Offers exceptional sensitivity - detect low femtogram levels
- Intense signal for flexible imaging or re-imaging 10+ hrs later
- Also compatible with film detection

Replaces Pierce  
SuperSignal™ West Dura

Cat #	Description	Qty/Unit	List Price	Your Price
20-301	ProSignal™ Dura ECL Reagent, 100ml Kit	1000cm <sup>2</sup>	325.85	297.25
20-301B	ProSignal™ Dura ECL Reagent, 200ml Kit	2000cm <sup>2</sup>	544.25	484.85



### ProSignal™ Femto **NEW!**

- The most sensitive Promethus™ ProSignal™ HRP substrate available
- Detect low abundance proteins with femtomolar sensitivity on film or CCD
- Intense signal that lasts for flexible imaging 8+ hours later
- Low background for better band quantification than other products

Replaces Pierce  
SuperSignal™ West Femto

Cat #	Description	Qty/Unit	List Price	Your Price
20-302	ProSignal™ Femto ECL Reagent, 100ml Kit	1000cm <sup>2</sup>	346.20	322.25
20-302B	ProSignal™ Femto ECL Reagent, 200ml Kit	2000cm <sup>2</sup>	566.40	520.80

Pierce and SuperSignal are trademarks of Thermo Fisher Scientific.