



## 1 Kb DNA Ladder

Catalog#: 19-115

Contents: 1 ml (200 lanes) 50 µg/ml  
Store at 4°C.

Reagent for in-vitro laboratory use only

### General Description

This ladder is a dsDNA ladder suitable for sizing double-stranded DNA fragments. Apex purified molecular weight markers are premixed ladders and loading buffer in a single tube. No mixing is required. Apex molecular weight markers are 100% marker without extraneous DNA and do not contain any residual plasmid.

### Range

1 Kb to 15 Kb in 1 Kb increments

### Reference Bands

Located at 5 Kb

### Composition of Storage Buffer

Supplied in ready-to-load format in modified Type II gel loading buffer: 15% w/v Ficoll 400 [GE Healthcare], 0.06% w/v Bromphenol blue, 0.06% w/v Xylene cyanol FF, 30mM EDTA

### Shipping and Storage Conditions

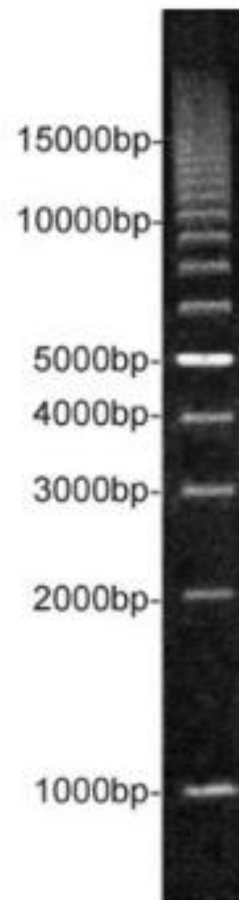
Apex custom DNA ladders may be kept safely at room temp. for at least 3 months. Ladders are guaranteed for 12 months from date of shipment when stored at 4°C. Shipped via overnight carrier at ambient temp.

### Suggestion for use:

- **Important:** Mix ladder briefly before use. Do not heat the ladder.
- Load 5 µL of ladder per lane (for gel wells of ~5-10mm width).
- Agarose gel electrophoresis: Prepare a 1 – 1.5% gel.
- Ethidium bromide (0.5 µg/mL) is the recommended gel stain. Other DNA stains can be used if preferred.

### Factors Influencing Resolution and Accurate Sizing of DNA Fragments

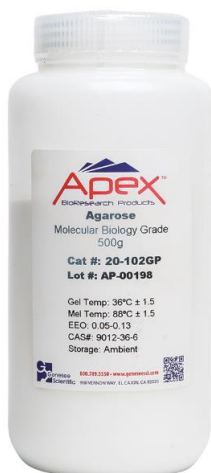
1. DNA loading: For accurate size determinations, load the smallest practical amount of sample DNA – e.g., 10-20ng of a single fragment is readily visible and will yield a sharp, accurately sized band.
2. Well thickness: For best resolution of DNA bands, use only properly formed sample wells, up to 1mm in thickness.
3. Salt concentration: It is important to accurately match the salt concentration of the ladder mixture to that of your samples in order to obtain the best size determinations. One useful technique for very precise sizing of sample fragments, which eliminates concerns over matching salt concentrations, is to co-electrophorese the ladder and the sample in the same well. Apex's low-background 20bp ladder (catalog #19-107) is ideal for this purpose, making accuracy of ~1% routinely achievable. Ladder-only and sample-only lanes should be run to aid in interpretation of electrophoresis patterns.



## Related Products

Description	Cat. No.
Taq DNA Polymerase, 500 Units (5U/ul) with 10X Standard and Ammonium Reaction Buffer 1 x 500u/Unit	<b>42-800B1</b>
Taq DNA Polymerase, 500 Units (5U/ul) with 10X Combination Buffer 2 x 500u/Unit	<b>42-800B3</b>
Taq DNA Polymerase, 500 Units (5U/ul) Glycerol Free 10 x 500u/Unit	<b>42-800B4</b>
Taq DNA Polymerase Master Mix, 2.0X 1.5mM MgCl <sub>2</sub> (Final Concentration) 100 Reactions/Unit	<b>42-131</b>
dNTP Set, 4x25μmol (100mM) 4 x 250μl/Unit	<b>42-410</b>
dNTP Set, 4x100μmol (100mM) 4 x 1ml/Unit	<b>42-403</b>
dNTP Set, 4x500μmol (100mM) 20 x 1ml/Unit	<b>42-404</b>
dNTP Mix, 20μmol (40mM) 1 x 500μl/Unit	<b>42-411</b>
dNTP Mix, 200μmol (100mM) 2 x 1ml/Unit	<b>42-405</b>
dNTP Mix, 100μmol (10mM) 10 x 1ml/Unit	<b>42-406</b>
dNTP Mix, 100μmol (40mM) 5 x 500μl/Unit	<b>42-407</b>
Apex 100bp-Low DNA Ladder, 250 Applications	<b>19-109</b>
Apex 1 Kb DNA Ladder, 333 Applications	<b>19-115</b>
Apex 200bp DNA Ladder, 200 Applications	<b>19-111</b>

## Apex General Purpose Agarose



### Apex AGAROSE guarantee

- Low EEO (<0.13) - This means biological macromolecules such as proteins or nucleic acids as well as larger particles such as viruses and subcellular fragments can migrate through the gel network virtually interference free due to the gel's neutral properties.
- Sharp, finely resolved banding resolution as well as excellent transparency for easy reading.
- Extraordinarily low gel background after applying staining agents.
- Superior mechanical resistance for more reliable and easier handling.



Concentration: 0.625mg/ml

**EtBr Dropper Bottle** - Adding and removing Ethidium Bromide has never been easier! For the recommended final concentration of 0.5ug/ml, simply add one drop for every 50ml of solution.



### EtBr Destaining Bags

Efficiently remove Ethidium Bromide from solutions and gels for safe and easy disposal. Now, with our NEW activation solution (included) our destaining bags demonstrate increased absorption efficiency speed relative to other similar products. Simply Add ~5ml of activation solution to the bag prior to use. For comparison data and absorption kinetics, please visit us online today at [www.geneseesci.com/etbrproducts](http://www.geneseesci.com/etbrproducts).

Description	Cat. No.
Apex TAE 25X Buffer, 1.6L Ultra Pure	<b>20-195</b>
Apex TBE Buffer 10X Concentrate, 4L	<b>20-196</b>
Apex EtBr Dropper Bottle, 10ml, 0.625mg/ml	<b>20-276</b>
Apex General Purpose Agarose, 100g	<b>20-101</b>
Apex General Purpose Agarose, 500g	<b>20-102</b>
Apex Super Resolution Agarose, 100g	<b>20-106</b>
Apex Super Fine Resolution Agarose, 100g	<b>20-239</b>
Apex Low Melt Agarose, 100g	<b>20-104</b>
Apex Low Melt Sieve Agarose, 100g	<b>20-245</b>

### Three options to access your contract prices:

- 1) Visit [www.geneseesci.com](http://www.geneseesci.com) and click on "Account Setup". Fill out your member information and your account will be activated within hours.
- 2) Email us at [support@geneseesci.com](mailto:support@geneseesci.com) or call 1-800-789-5550 with your name, institution, and email address. We will email you your discount prices.
- 3) Call us at 1-800-789-5550 and ask for an Account Representative to contact you.

**Toll Free:** 1-800-789-5550 **Fax:** 1-888-789-0444

**Url:** [www.geneseesci.com](http://www.geneseesci.com) **email:** [support@geneseesci.com](mailto:support@geneseesci.com)

**View your discounted prices online!**

