



PCR DNA Ladder

Concentration: 50µg/ml (+/- 1%)

Lot #:

Cat. No.	Size	Volume
42-432	100 lanes	1 x 0.5 mL
42-433	200 lanes	1 x 1.0 mL
42-434	500 lanes	1 x 2.5 mL

FOR RESEARCH USE ONLY

Description

PCR DNA Ladder is the perfect choice for analysis of DNA fragments less than 3000 bp. The ladder contains a total of eight bands ranging from 3000 to 100 bp. All bands contain 25 ng except the 1000 bp band, which contains 75 ng. The 1000 bp band is thus more intense, serving as an easily identifiable reference point. The 100 bp band may appear faint due to diffusion during electrophoresis.

The ladder is supplied in loading buffer, ready-to-use on agarose and polyacrylamide gels. It is suitable with both TBE and TAE electrophoresis systems.

Composition of Storage Buffer

Supplied in ready-to-load format in modified Type IV gel loading buffer: Tris-EDTA, pH 8.5, 8% sucrose, 0.05% Bromphenol Blue.

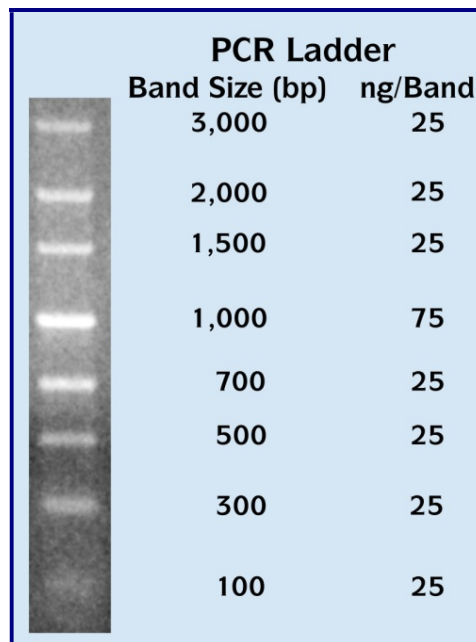
Storage Conditions

Apex custom DNA ladders may be kept safely at room temp. for at least 3 months. Ladders are guaranteed for 12 months from date of shipment when stored at 4°C. Aliquot product if necessary to avoid repeated freezing and thawing cycles.

Quality Control

Agarose gel analysis shows that all bands are present at the expected location and band intensity.

Shipped at ambient temperature



5 µL DNA Ladder/lane, 1% agarose in 1X TAE stained with ethidium bromide

Suggestions for use

- **Important:** Mix ladder briefly before use. Do not heat the ladder.
- Load 5 µL of ladder per lane (for gel wells of ~5-10mm width).
- Agarose gel electrophoresis: Prepare 1% gel. The dye should migrate 60 - 70% the length of the gel.
- Polyacrylamide gel electrophoresis: Prepare 8% gel. The dye should migrate approx. 90% the length of the gel.
- Ethidium bromide (0.5 µg/mL) is the recommended gel stain.

FOR RESEARCH USE ONLY



Customer Service: ----- (800) 789.5550
 Fax: ----- (888) 789.0444
 e-mail: -----support@genesesci.com
 Technical Service:----- (800) 789.5550
 Web: ----- www.genesesci.com