



## DNA Ladder I

**DNA Concentration:** 136µg/ml (+/- 1%)  
**Lot #:**

Cat. No.	Size	Volume
42-426	100 lanes	1 x 0.5 mL
42-427	200 lanes	1 x 1.0 mL
42-428	500 lanes	1 x 2.5 mL

FOR RESEARCH USE ONLY

### Description

DNA Ladder I is a broad range dsDNA Ladder with bands from 200bp to 12Kb. The ladder can be used to quantitate the amount of DNA in a sample since the mass of DNA in each band in the ladder has been calibrated to range from 15 to 100ng (see figure).

The ladder is supplied in “ready-to-load” format in modified Type IV gel loading buffer. Tris-EDTA, pH8.5, 8% sucrose, 0.05% Bromophenol Blue.

### Composition of Storage Buffer

Tris-EDTA, pH8.5, 8% sucrose, 0.05% Bromophenol Blue.

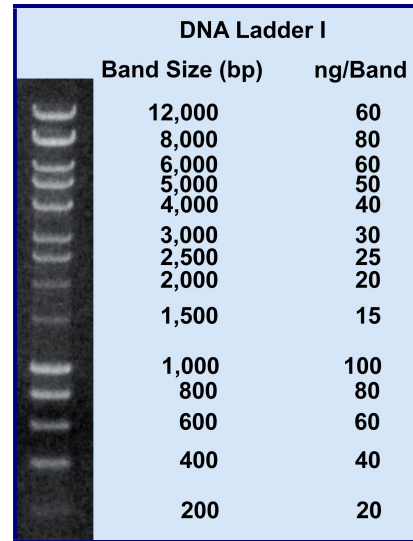
### Storage Conditions

Apex custom DNA ladders may be kept safely at room temp. for at least 3 months. Ladders are guaranteed for 12 months from date of shipment when stored at 4°C. Aliquot product if necessary to avoid repeated freezing and thawing cycles.

### Quality Control

Agarose gel analysis shows that all bands are present at the expected location and band intensity.

*Shipped via overnight carrier at ambient temp.*



5 µL DNA Ladder/lane, 1% agarose in 1X TAE stained with ethidium bromide

### Suggestions for use

- **Important:** Mix ladder briefly before use. Do not heat the ladder.
- Load 5 µL of ladder per lane for gel wells of ~5-10mm width. This translates to the indicated ng/band (see Fig.)
- Agarose gel electrophoresis: Prepare 1% gel. The dye should migrate 60 - 70% the length of the gel.
- Polyacrylamide gel electrophoresis: Prepare 8% gel. The dye should migrate approx. 90% the length of the gel.
- Ethidium bromide (0.5 µg/mL) is the recommended gel stain.



FOR RESEARCH USE ONLY

Customer Service: ----- (800) 789.5550

Fax: ----- (888) 789.0444

Technical Service:----- (800) 789.5550

Web: ----- www.geneseesci.com

e-mail: -----support@geneseesci.com