

Introduction

The Droso-MAXX is an enhancement to the Droso-Filler™ and can be retro-fitted to any Droso-Filler with a serial number. The Droso-MAXX has been modified for easy installation and removal. This modification is a slider assembly which has replaced the four attachment screws used on older models. Moving the Droso-MAXX from one Droso-Filler to another is simple and fast. Bleed the air from the supply tubing; this releases pressure from the Slider Plate Effector. Then lift the Droso-MAXX off the front of one Droso-Filler and move it to another one being used, easy, fast and efficient.



Safety Precautions

For safe and correct use of the Droso-MAXX, it is recommended that operating personnel follow the instructions contained in this guide when installing, cleaning and maintaining the Droso-MAXX.

Always shut off the air supply and release the air from the supply line before disconnecting the Droso-MAXX air supply line from the elbow connector on the left side of the Droso-MAXX. Otherwise, there is a potential for bodily harm.

Unpacking

Remove the Droso-MAXX from the shipping box. Remove the Droso-MAXX by the air actuator, being careful of the air actuator switch lever on the top right and the lower plate effector on the bottom middle. Make sure that the Start-up Accessory Kit was shipped.

Start-up Accessory Kit

The Start-up Accessory Kit should have the following:

- MAXX™ Quick Disconnect Fitting for Air Compressor
- MAXX™ Air Supply Tubing, 10'

Accessory

You will need to provide an air source capable of 100 psi of constant air pressure for maximum performance of the Droso-MAXX.

Customer Service

Genesee Scientific provides customers with the following assistance: technical support and repair of the Droso-MAXX.

If you need assistance, please contact us at 858.536.8044 or email at support@geneseesci.com.

Droso-MAXX Installation

This section takes you through the steps for setting up the Droso-MAXX™ on your Droso-Filler.



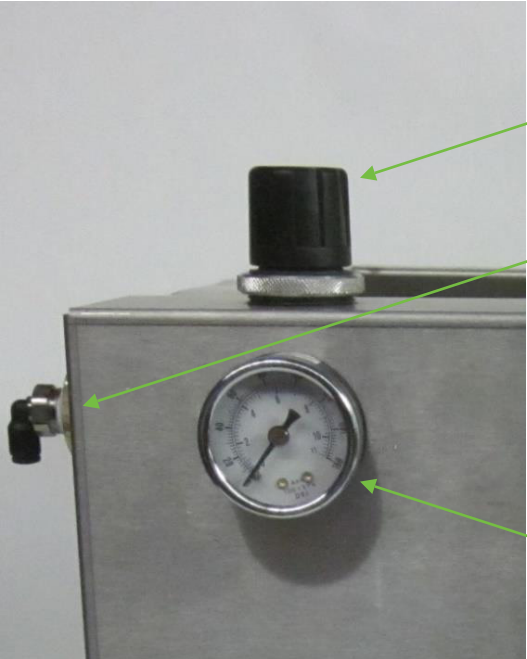
Droso-Filler with Droso-MAXX

Droso-MAXX Description



Droso-MAXX Front Shroud Assembly

Air Supply Assembly

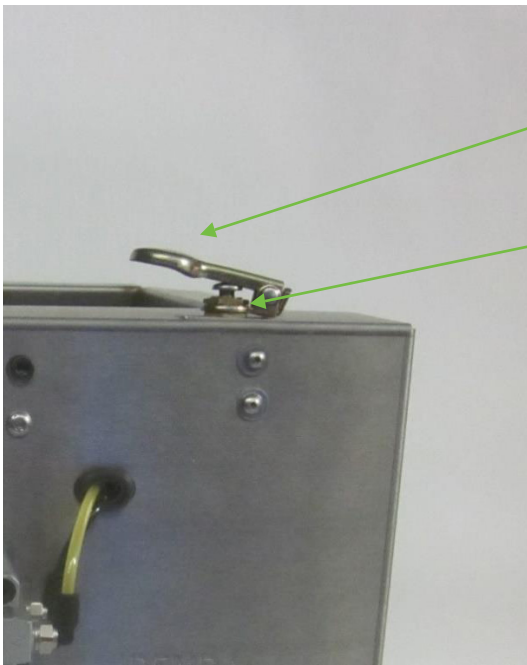


Air Regulator Adjustment Knob

Air Supply Tubing Elbow Connector

Air Pressure Gauge

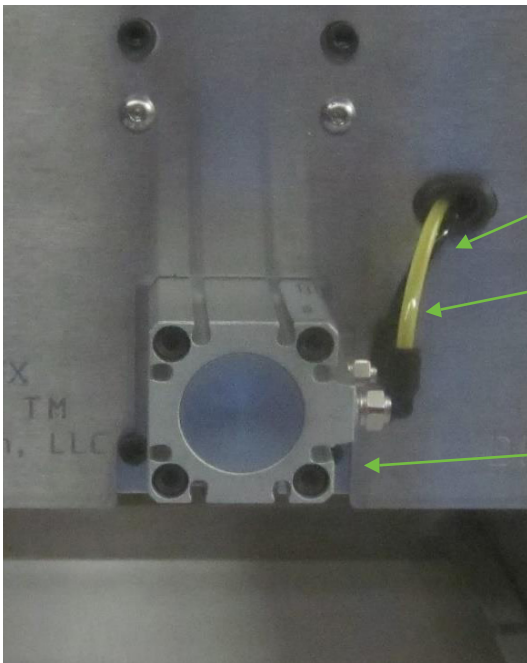
Activator Switch Assembly



Air Activator Switch Lever

Air Activator Switch Button

Air Actuator Assembly

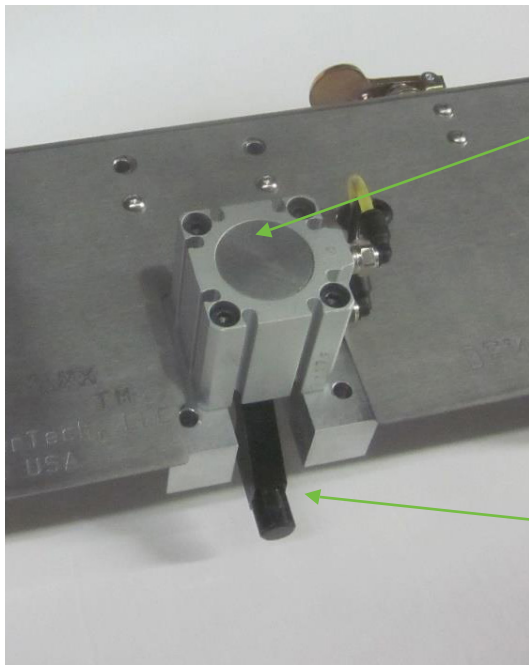


Black, Slider Plate Open Air Supply Tubing

Yellow, Slider Plate Closed Air Supply Tubing

Slider Plate Air Actuator

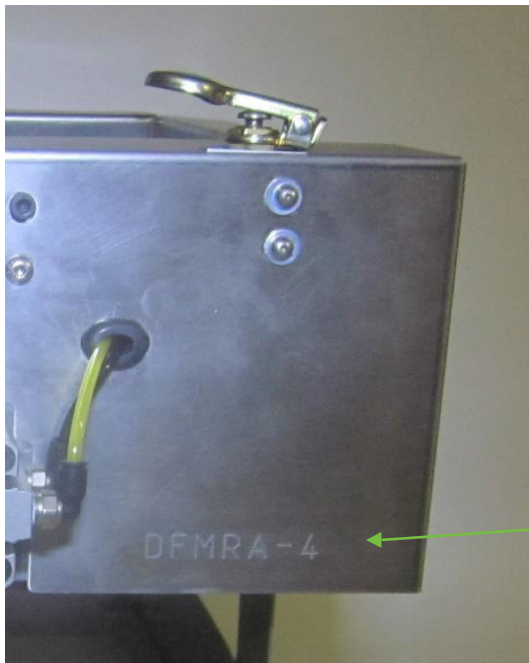
Lower Plate Effector



Slider Plate Air Actuator

Slider Plate Effector

Air Actuator Assembly



Serial Number

Droso-MAXX Installation



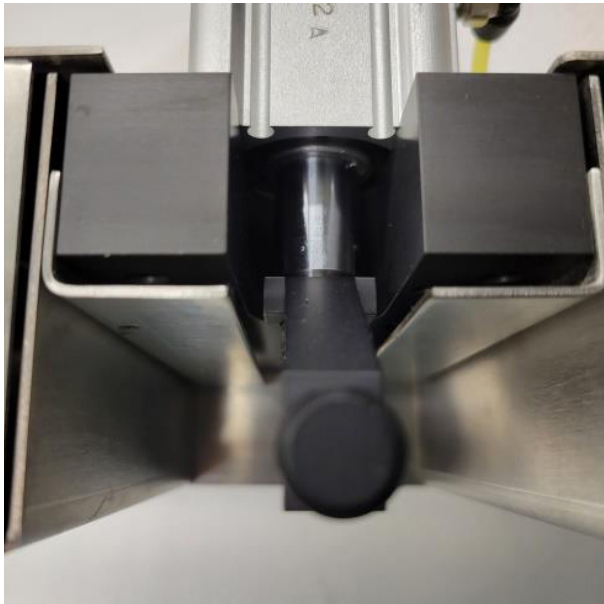
The Droso-MAXX can only be used with the Teflon™ slider plate that is used with the serial-numbered Droso-Fillers. The older non-serialized fillers can be retro-fitted with a modified plate. Contact Genesee Scientific support@geneseesci.com for assistance with retrofit.



Remove the front cover from the Droso-Filler by removing the four screws. Remove the positioning handle by pulling the cotter pin from the rotator pin holding the handle in place. Once the handle has been removed, place the rotator pin back in the handle and secure it with the cotter pin. Store the handle to use when removing the Teflon slider plate for thorough cleaning of the Droso-Filler.



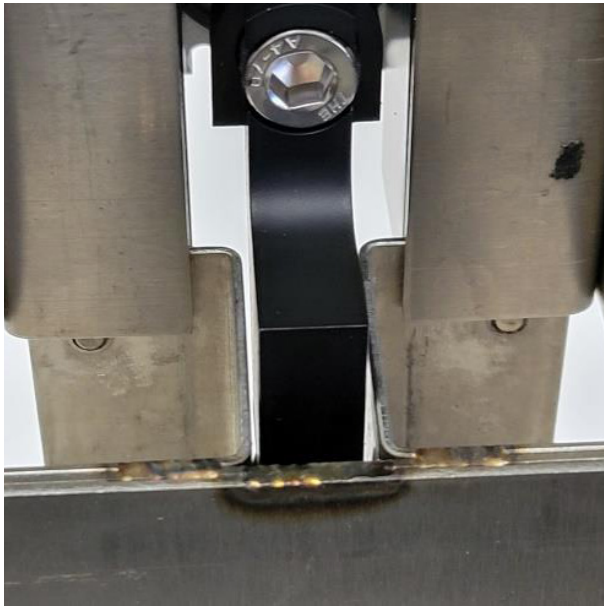
The front of the Droso-Filler with the front cover removed. Notice the two angled metal pieces that are mounted on the front with four screw holes used to secure the front cover. These will be used to secure the Droso-MAXX to the Droso-Filler.



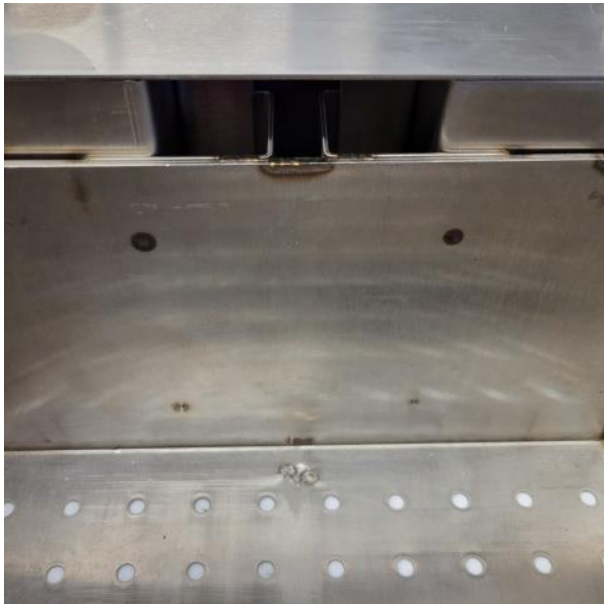
The Droso-MAXX also has two angled pieces of metal attached to the black mounting block.



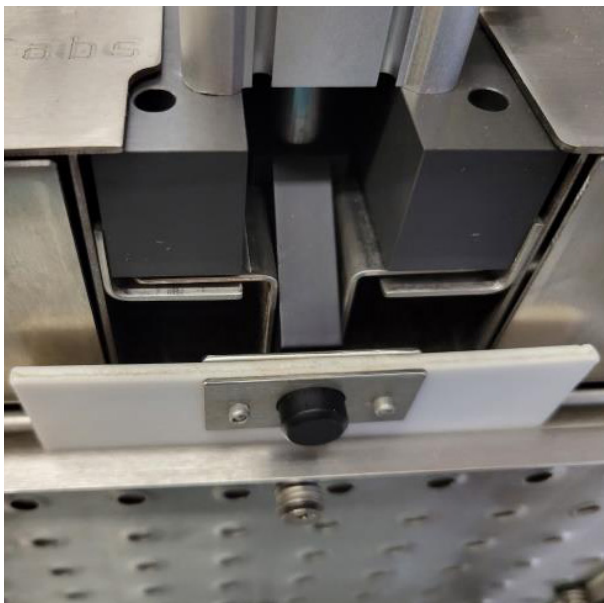
The Slider Plate Effector should be completely extended and will fit between the two angled pieces on the Droso-Filler. The slots formed between the mounting block and the angled pieces on the Droso-MAXX will slide down behind the two angled pieces on the Droso-Filler. This will secure the Droso-MAXX to the Droso-Filler.



From the back of the Droso-MAXX see how the slider mechanism starts with the Slider Plate Effector in between the mounting angle pieces.



As the Droso-MAXX approaches the bottom, the End Effector will start to come in contact with the Teflon slider plate. The slider plate will be in the closed position which means that the slider plate is pushed all the way into the Droso-Filler and the holes in the bottom of the filler are closed. Make sure that the Slider Plate Effector seats properly into the hole on the front of the slider plate.



This is what it will look like when everything is properly completed. The angled pieces on the Droso-MAXX will be behind the metal mounting angles on the Droso-Filler. The Slider Plate Effector will be seated in the slider plate hole.

Compressor Quick Disconnect Installation



Remove the brass coupling, used for industrial items, from the air compressor.



Attach the MAXX Quick Disconnect fitting in place of coupling. This will be used to connect the air compressor to the Droso-MAXX.

Droso-MAXX to Droso-Filler Installation

1. Tip the Droso-Filler on its back so the front cover is facing up
2. Remove the four phillips head screws
3. Make sure that the Teflon slider plate is in the closed position
4. If you are retro-fitting the Droso-MAXX to your present Droso-Filler, then remove the lower plate slider arm by removing the cotter-pin from the rotator pin and sliding out the rotator pin. The slider arm should now be free
5. Put the rotator pin back in the handle and secure it with the cotter pin. Store the handle to use when removing the Teflon slider plate for thorough cleaning of the Droso-Filler
6. Set Droso-Filler upright
7. Place the Droso-MAXX on the front of the Droso-Filler by lining up the slider assembly on Droso-MAXX with the angled pieces of metal on the front of the Droso-Filler and sliding it down to seat the Slider Plate Effector into the Teflon plate recess hole
8. Connect the MAXX Air Supply Tubing to the elbow connector on the left side of the Droso-MAXX
9. Connect the other end of the MAXX Air Supply Tubing to the MAXX Quick Disconnect fitting on your air supply and start air flowing
10. Make sure that the air pressure is set between 100-110psi
11. Test the Droso-Filler MAXX by depressing the Air Actuator Switch and watching the slider plate movement. Make sure that the holes, at the bottom of the filler, are aligned properly with holes in the Teflon slider plate when open
12. The Droso-MAXX and Droso-Filler are now ready for preparing fly food

Note: On initial installation the MAXX Quick Disconnect fitting should be attached to your air source (Air bottle with regulator or air compressor that can supply >100psi constant air pressure).

Droso-MAXX & Droso-Filler Cleaning

After cleaning, shut off the air supply. Release air pressure from the air compressor and supply tubing. This will allow for removal of the Droso-MAXX from the Droso-Filler. Remove the Droso-MAXX and wipe any excess moisture from the outside. The Droso-MAXX is water resistance, not water proof so do not submerge in water. Try not to submerge the Droso-MAXX in water. The Droso-MAXX can then be placed back on the Droso-Filler for storage until the next use.

The trademarks mentioned herein are the property of Genesee Scientific Corporation or their respective owners.

Phone: 858.536.8044 • **Email:** support@geneseesci.com • **Web:** flystuff.com