



DNA Ladder II

DNA Concentration: 100µg/ml (+/- 1%)
 Lot #:

Cat. No.	Size	Volume
42-429	100 lanes	1 x 0.5 mL
42-430	200 lanes	1 x 1.0 mL
42-431	500 lanes	1 x 2.5 mL

FOR RESEARCH USE ONLY

Description

DNA Ladder II is a broad range molecular weight marker with bands from 100bp to 1Kb (see Fig.). The ladder can also be used to quantitate the amount of DNA in a sample since the mass of DNA in each band in the ladder has been calibrated to range from 20 to 100 ng (see figure).

The ladder is supplied in “ready-to-load” format in modified Type IV gel loading buffer: Tris-EDTA, pH 8.5, 8% sucrose, 0.05% Bromophenol Blue.

Composition of Storage Buffer

Tris-EDTA, pH 8.5, 8% sucrose, 0.05% Bromophenol Blue.

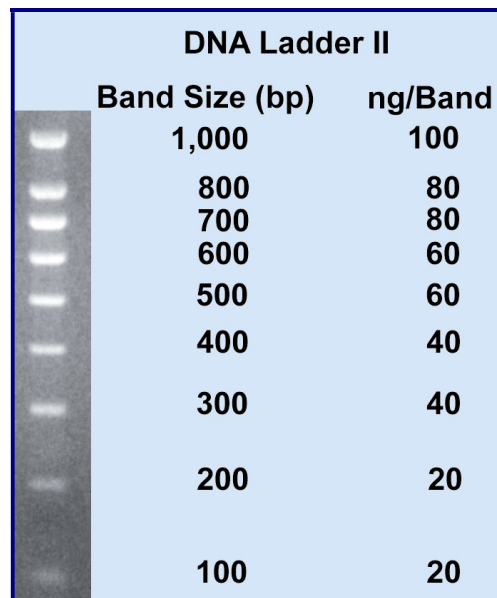
Storage Conditions

Apex custom DNA ladders may be kept safely at room temp. for at least 3 months. Ladders are guaranteed for 12 months from date of shipment when stored at 4°C. Aliquot product if necessary to avoid repeated freezing and thawing cycles.

Quality Control

Agarose gel analysis shows that all bands are present at the expected location and band intensity.

Shipped via overnight carrier at ambient temp.



5 µL DNA Ladder/lane, 2% agarose in 1X TAE stained with ethidium bromide

Suggestions for use

- **Important:** Mix ladder briefly before use. Do not heat the ladder.
- Load 5 µL of ladder per lane for gel wells of ~5-10mm width. This translates to the indicated ng/band (see Fig.)
- Agarose gel electrophoresis: Prepare 1% gel. The dye should migrate 60 - 70% the length of the gel.
- Polyacrylamide gel electrophoresis: Prepare 8% gel. The dye should migrate approx. 90% the length of the gel.
- Ethidium bromide (0.5 µg/mL) is the recommended gel stain.

FOR RESEARCH USE ONLY



Customer Service: ----- (800) 789.5550
 Fax: ----- (888) 789.0444
 Technical Service:----- (800) 789.5550
 Web: ----- www.genesesci.com
 e-mail: -----support@genesesci.com